

Installation Detail

If your proposed installation details differ from that shown here, please discuss this with the authority having jurisdiction, referencing this documentation.

Deviation from this drawing requires approval of the relevant authority.

Connecting ductwork omitted for clarity. Ductwork must be independently supported. There must be an appropriate break-away joint between the damper and the connecting ductwork on both sides of the installation.

A minimum of 200mm between fire dampers installed in separate ducts and 75mm between fire damper and construction elements/edges needs to be observed unless otherwise specified in the drawing.



SCAN ME

Please refer to the DoP for latest classifications for CE/UKCA compliance and the Installation, Operation and Maintenance Guide

E	ECN2227	JPM	13/04/22
D	EC1830	RTC	20/03/18
C	EC1770	MJB	20-02-18
Rev:	Comments:	By:	Date:

Drawn By: J.Mount Date: 27/04/2022

Checked By: Date:

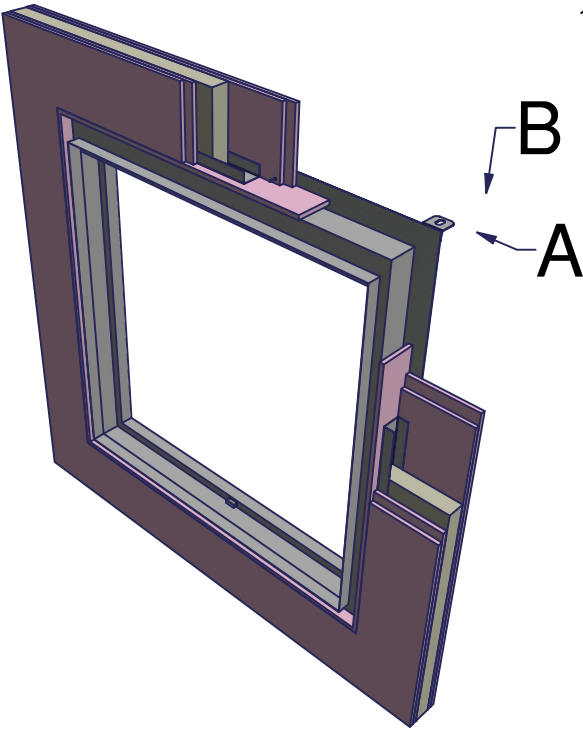
Approved By: Date:

Description:

**VERTICAL APPLICATION
FIRE SHIELD DWFX-F IN
PLASTERBOARD WALL**

Damper Size Range (mm)
100 x 100 to 1250 x 1000

Reference No: AAF10705	Sheet 1 of 2	Rev E
---------------------------	-----------------	----------



12.5mm x 100/125/150/175mm. (to suit damper type, see below) gypsum fireboard type F (EN520), can be fitted at top of damper fixed with drywall screws (at 300mm centres). (optional)*

12.5mm Gypsum fire boards type F (EN520) all round

Gap can be packed with stone wool all round min 30kg/m³ (optional)*

Damper casing

min 100mm wall thickness

2-off 12.5mm Gypsum fire boards type F (EN520) both sides

Stone wool min 30kg/m³ at least 40mm deep

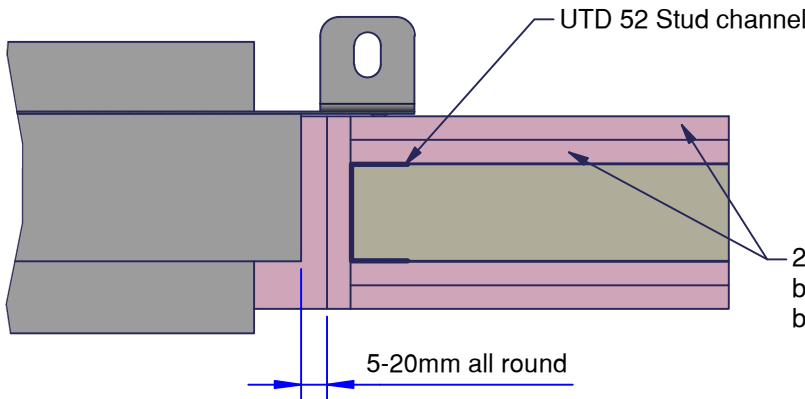
UTD 52 Stud channel

Angle cleats

M10 drop rods supporting duct (all drop rods supported by others) M10 nuts & washers to underside of cleats only (optional)*

DWFX-F Flange (welded to damper casing) fixed with drywall screws (@ 150mm ctrs) into stud channel, all round.

VIEW A



UTD 52 Stud channel

2-off 12.5mm Gypsum fire boards type F (EN520) both sides

5-20mm all round

VIEW B
(SIDE DETAIL)

*The damper can be installed with or without drop rods as long as the wall is capable of carrying the load of the damper and with or without the pattress as shown.

The penetration seal can be either filled with a stonewool min30kg/m3 or an ablative coated batt as required or can be left unfilled.

Please see drawing AAF10705, page 2 for alternative configurations:



Installation Detail

If your proposed installation details differ from that shown here, please discuss this with the authority having jurisdiction, referencing this documentation.

Deviation from this drawing requires approval of the relevant authority.

Connecting ductwork omitted for clarity. Ductwork must be independently supported. There must be an appropriate break-away joint between the damper and the connecting ductwork on both sides of the installation.

A minimum of 200mm between fire dampers installed in separate ducts and 75mm between fire damper and construction elements/edges needs to be observed unless otherwise specified in the drawing.



SCAN ME

Please refer to the DoP for latest classifications for CE/UKCA compliance and the Installation, Operation and Maintenance Guide

Rev:	Comments:	By:	Date:
Drawn By:	J.Mount	Date:	27/04/2022
Checked By:		Date:	
Approved By:		Date:	

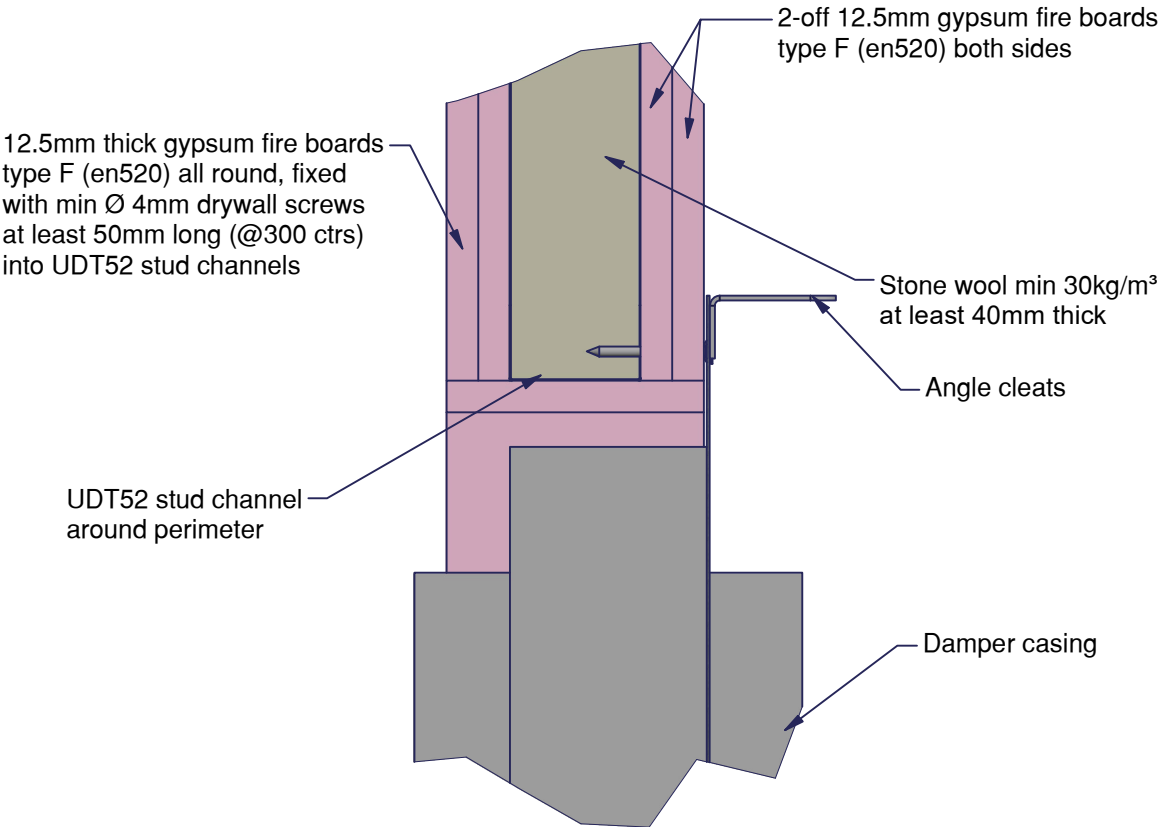
Description:
VERTICAL APPLICATION
FIRE SHIELD DWFX-F IN
PLASTERBOARD WALL

Damper Size Range (mm)
100 x 100 to 1250 x 1000

Reference No:	Sheet	Rev
AAF10705	2 of 2	E

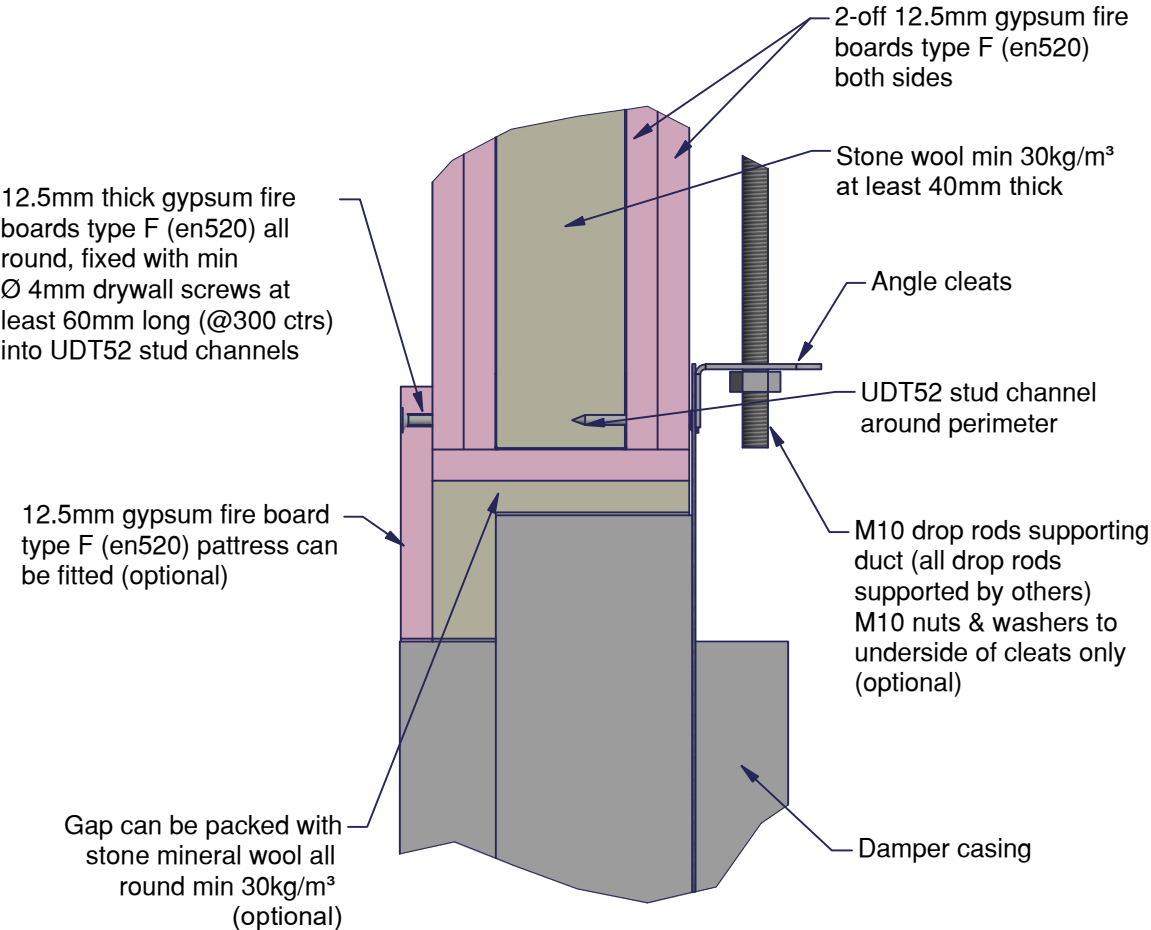
VIEW 1 Standard Single Side Fix

Pattress ✕
Insulation ✕
Droprods ✕



VIEW 2 Opitonal Elements of Penetration Seal (If required)

Pattress ✓
Insulation ✓
Droprods ✓



Damper Installation Configuration Options

Pattress	Insulation	Droprods
✕	✕	✕
✓	✕	✕
✕	✓	✕
✕	✕	✓
✓	✓	✕
✕	✓	✓
✓	✕	✓
✓	✓	✓

