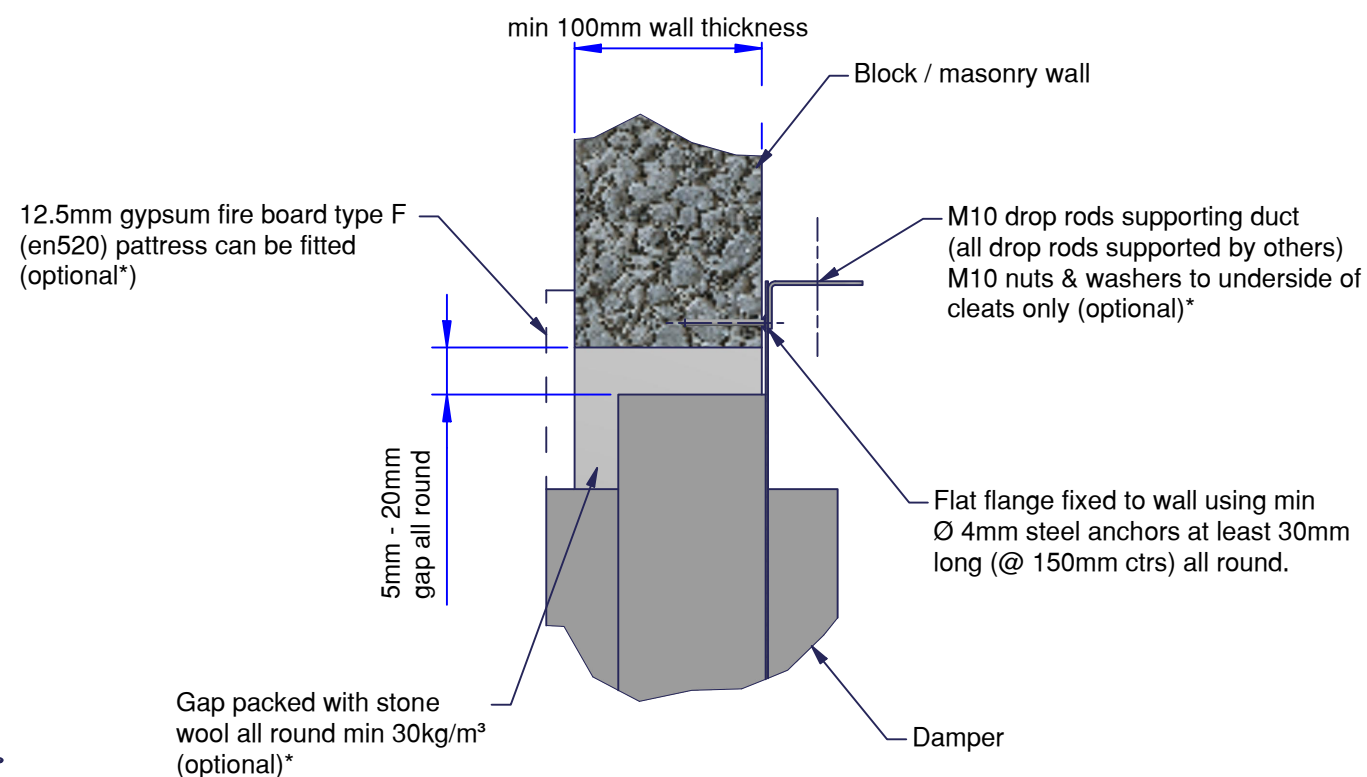
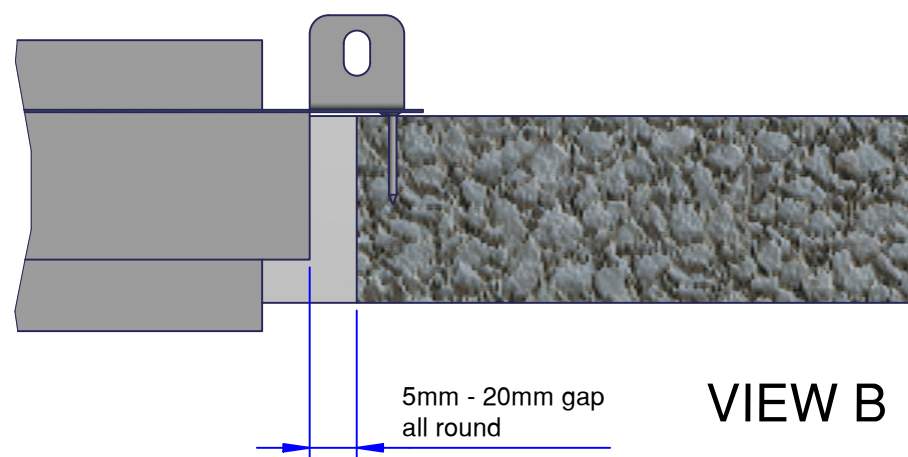


VIEW A



VIEW B



*The damper can be installed with or without drop rods as long as the wall is capable of carrying the load of the damper and with or without the pattress as shown.

The penetration seal can be either filled with a stonewool min 30kg/m³ or an ablative coated batt as required or can be left unfilled.

Please see drawing AAF10707 Page 2 for alternative configurations:

Installation Detail

If your proposed installation details differ from that shown here, please discuss this with the authority having jurisdiction, referencing this documentation.

Deviation from this drawing requires approval of the relevant authority.

Connecting ductwork omitted for clarity. Ductwork must be independently supported. There must be an appropriate break-away joint between the damper and the connecting ductwork on both sides of the installation.

A minimum of 200mm between fire dampers installed in separate ducts and 75mm between fire damper and construction elements/edges needs to be observed unless otherwise specified in the drawing.



SCAN ME

Please refer to the DoP for latest classifications for CE/UKCA compliance and the Installation, Operation and Maintenance Guide

G	ECN2227	JPM	13/04/22
F	EC1830	RTC	20/03/18
E	EC1770	MJB	20-02-18
Rev:	Comments:	By:	Date:
Drawn By:	swehrle	Date:	02/06/2011
Checked By:	Kimberley.M	Date:	13/04/2022
Approved By:	Gore.S	Date:	13/04/2022

Description:

**VERTICAL APPLICATION
FIRE SHIELD + DWFX-F IN
MASONRY WALL**

Damper Size Range (mm)
100 x 100 to 1250 x 1000

Reference No:	Sheet	Rev
AAF10707	1 of 2	G



Installation Detail

If your proposed installation details differ from that shown here, please discuss this with the authority having jurisdiction, referencing this documentation.

Deviation from this drawing requires approval of the relevant authority.

Connecting ductwork omitted for clarity. Ductwork must be independently supported. There must be an appropriate break-away joint between the damper and the connecting ductwork on both sides of the installation.

A minimum of 200mm between fire dampers installed in separate ducts and 75mm between fire damper and construction elements/edges needs to be observed unless otherwise specified in the drawing.



SCAN ME

Please refer to the DoP for latest classifications for CE/UKCA compliance and the Installation, Operation and Maintenance Guide

Rev:	Comments:	By:	Date:
Drawn By:	swehrle		Date: 02/06/2011
Checked By:	Kimberley.M		Date: 13/04/2022
Approved By:	Gore.S		Date: 13/04/2022

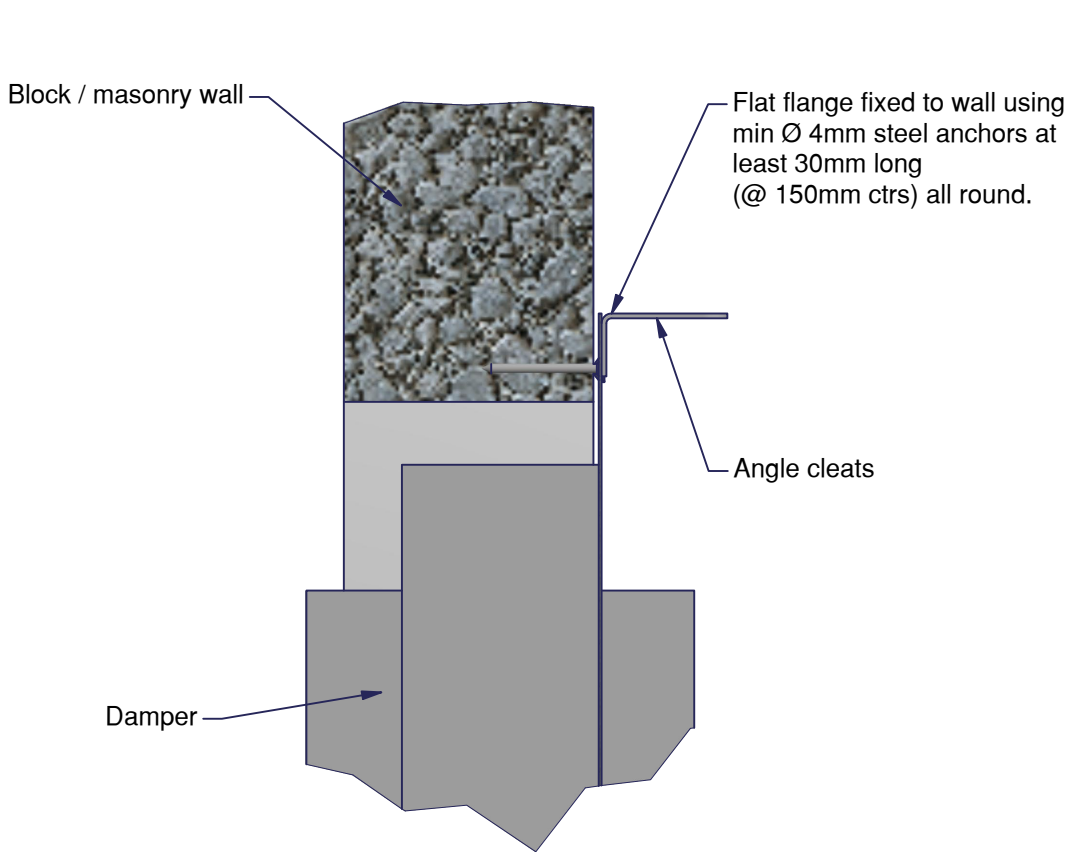
Description:
**VERTICAL APPLICATION
FIRE SHIELD + DWFX-F IN
MASONRY WALL**

Damper Size Range (mm)
100 x 100 to 1250 x 1000

Reference No:	Sheet	Rev
AAF10707	2 of 2	G

VIEW 1 Standard Single Side Fix

Pattress ✕
Insulation ✕
Droprods ✕



VIEW 2 Opitonal Elements of Penetration Seal (If required)

Pattress ✓
Insulation ✓
Droprods ✓

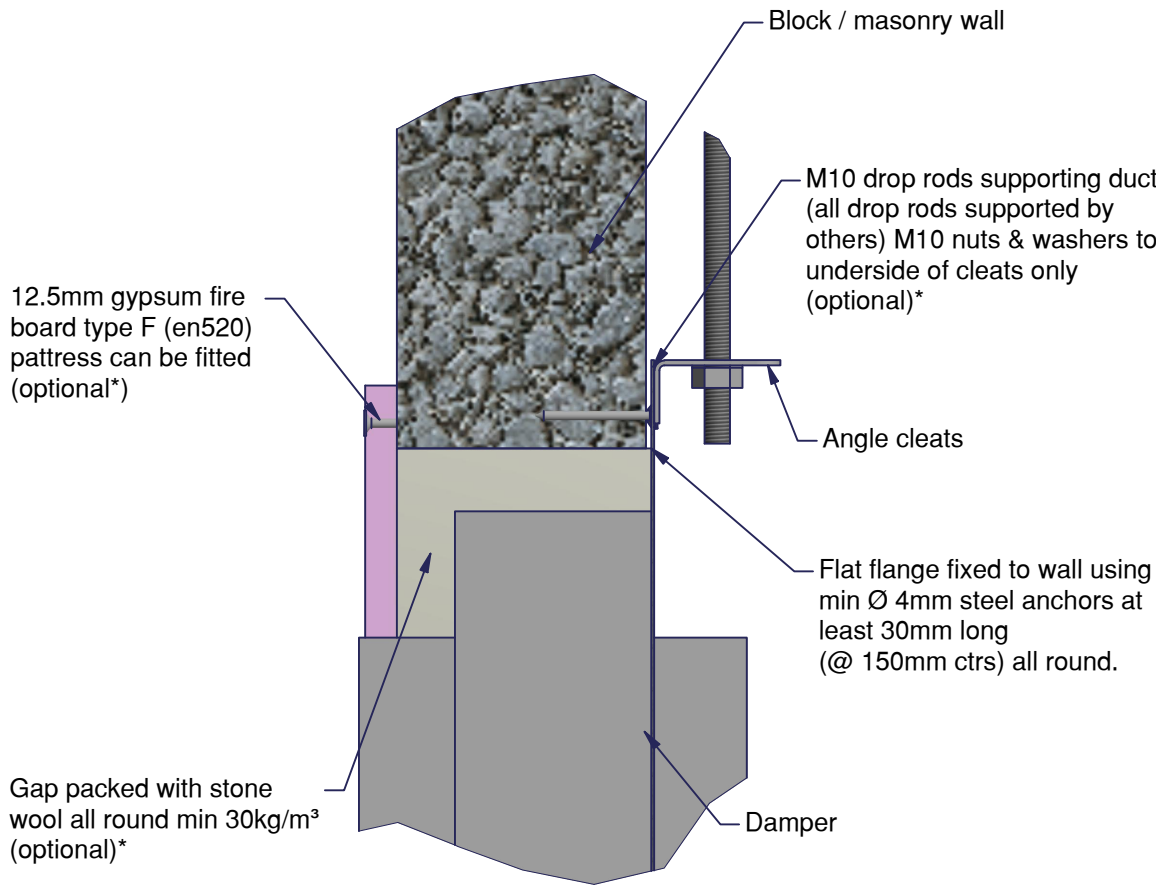


Table		
Pattress	Insulation	Droprods
✕	✕	✕
✓	✕	✕
✕	✓	✕
✕	✕	✓
✓	✓	✕
✕	✓	✓
✓	✕	✓
✓	✓	✓

