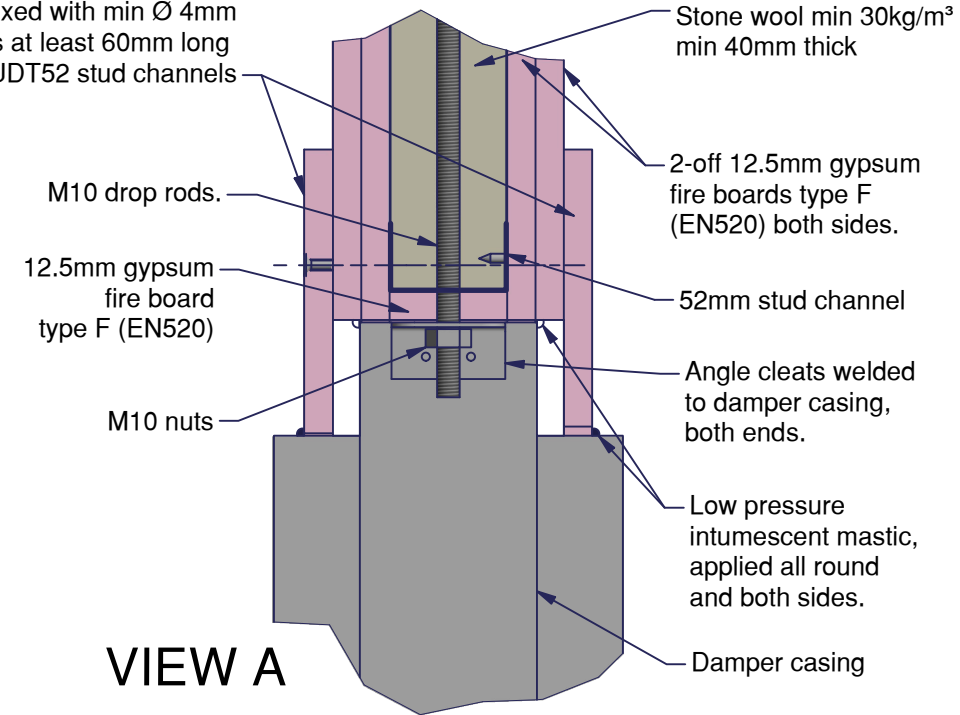




VERTICAL BLADES;

Damper can be installed with the blades in the vertical orientation with the actuator mounted at either the top or bottom refer to drawings for cleat locations;
DWFX-C actuator at top = AA-SS-2000
DWFX-C actuator at bottom = AA-SS-2001

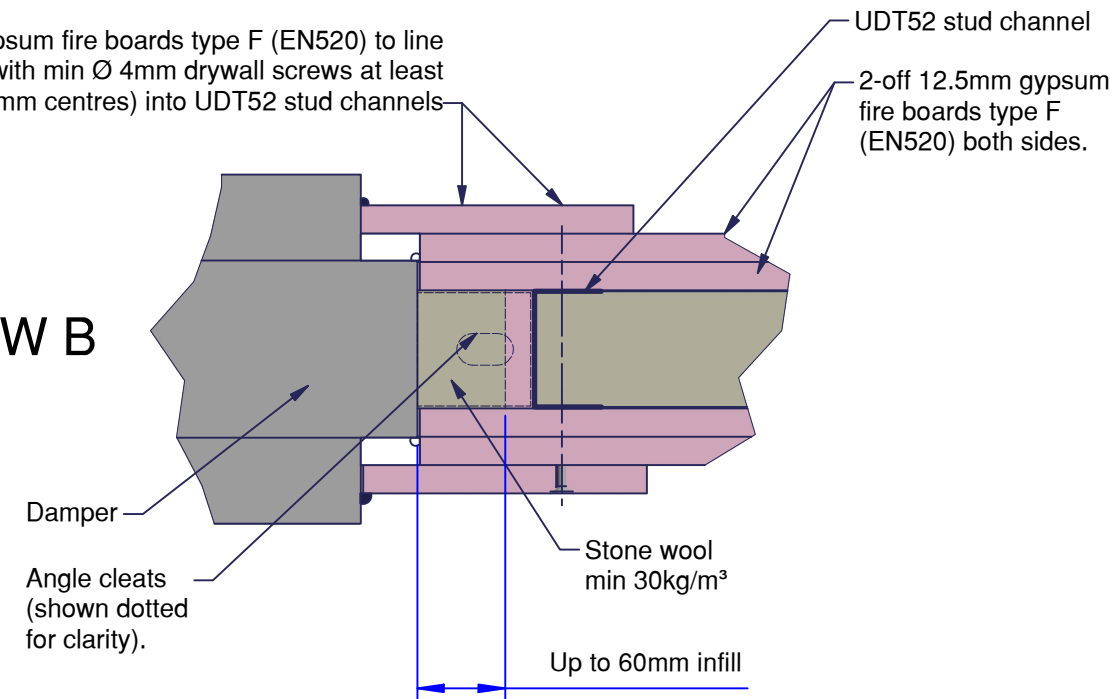
12.5mm thick both sides gypsum fire boards type F (EN520) all round, fixed with min Ø 4mm drywall screws at least 60mm long (@300mm centres) into UDT52 stud channels



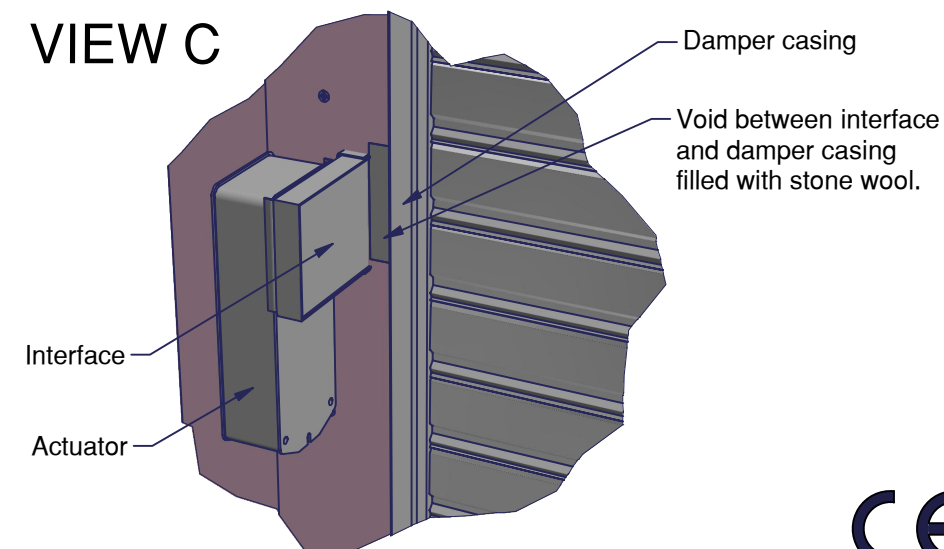
VIEW A

12.5mm thick gypsum fire boards type F (EN520) to line all round, fixed with min Ø 4mm drywall screws at least 60mm long (@300mm centres) into UDT52 stud channels

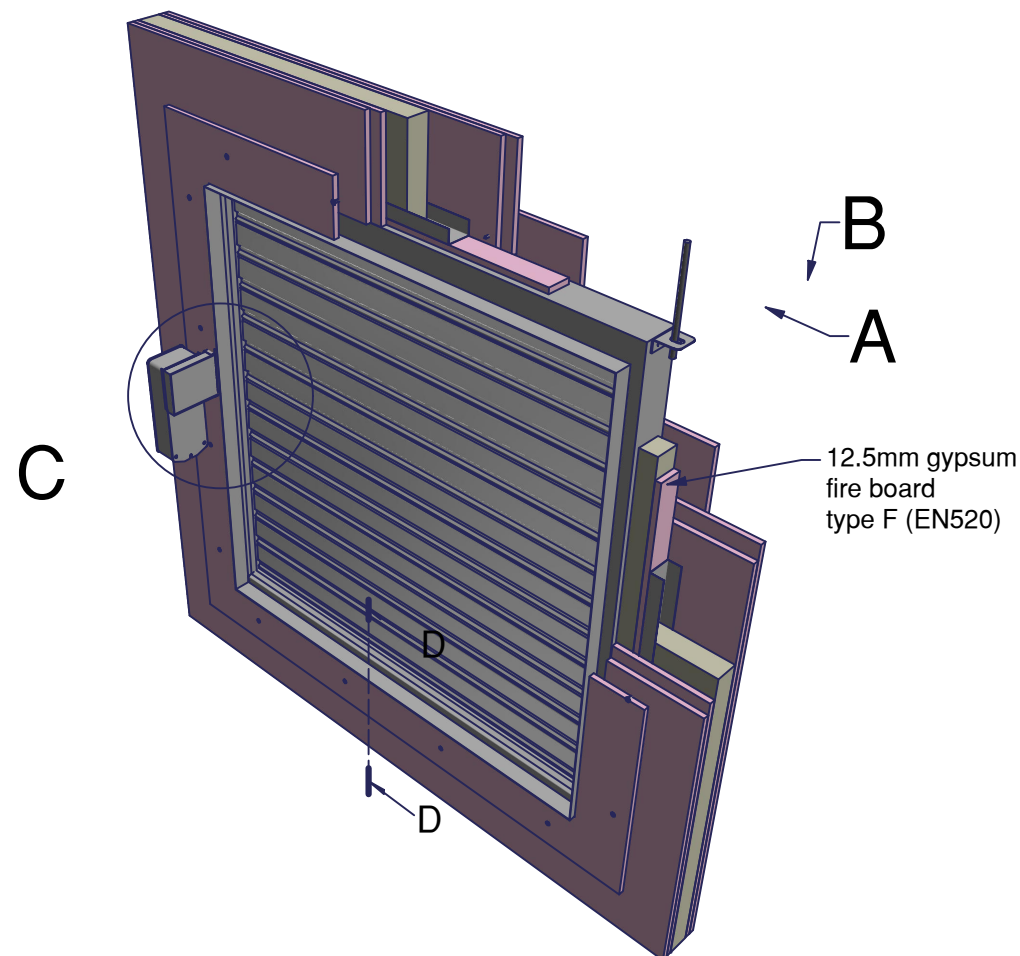
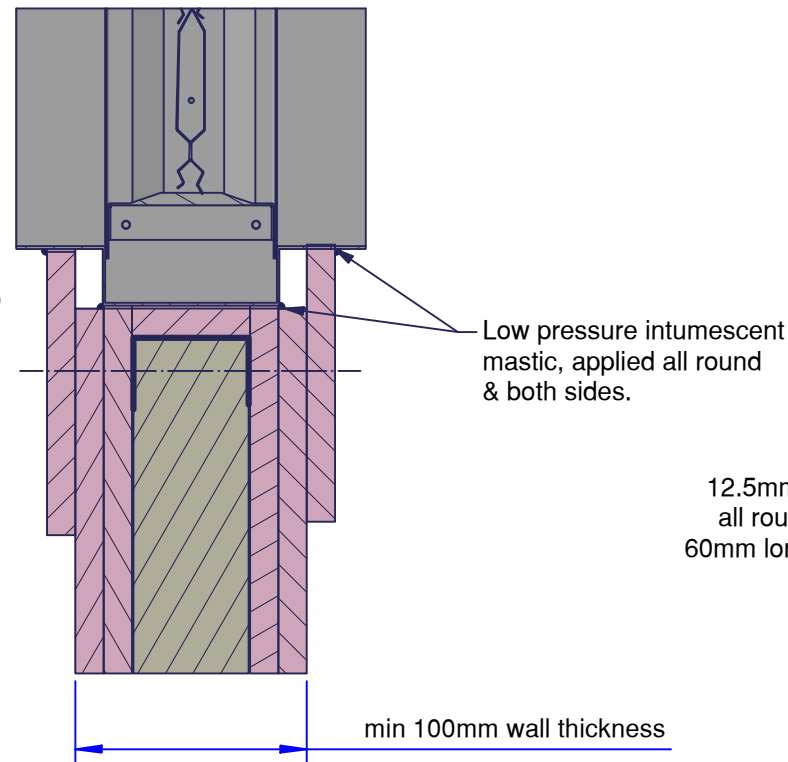
VIEW B



VIEW C



SECTION D-D



actionair

by Swegon

© Swegon Air Management Limited
South Street, Whitstable, Kent CT5 3DU
Tel: +44 (0)1227 276100
Email: actionair@swegon.com
www.swegon.com/uk

Installation Detail

If your proposed installation details differ from that shown here, please discuss this with the authority having jurisdiction, referencing this documentation.

Deviation from this drawing requires approval of the relevant authority.

Connecting ductwork omitted for clarity. Ductwork must be independently supported. There must be an appropriate break-away joint between the damper and the connecting ductwork on both sides of the installation.

A minimum of 200mm between fire dampers installed in separate ducts and 75mm between fire damper and construction elements/edges needs to be observed unless otherwise specified in the drawing.



SCAN ME

Please refer to the DoP for latest classifications for CE/UKCA compliance and the Installation, Operation and Maintenance Guide

G	ECN2227	JPM	29/04/22
F	ECN1999	MJB	04-11-20
E	EC1830	RTC	20/03/18
D	EC1770	MJB	20-02-18
Rev:	Comments:	By:	Date:
Drawn By:	swehrle	Date:	03/10/2005
Checked By:	Kimberley.M	Date:	29/04/2022
Approved By:	Gore.S	Date:	29/04/2022

Description:

VERTICAL APPLICATION
SMOKE SHIELD DWFX-C IN
PLASTERBOARD WALL

Damper Size Range (mm)
200 x 200 to 1000 x 1000



Reference No:	Sheet	Rev
AAF10708	1 of 1	G