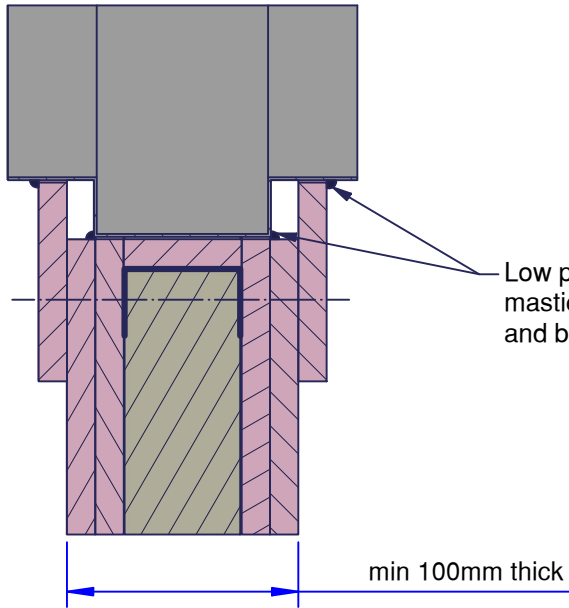
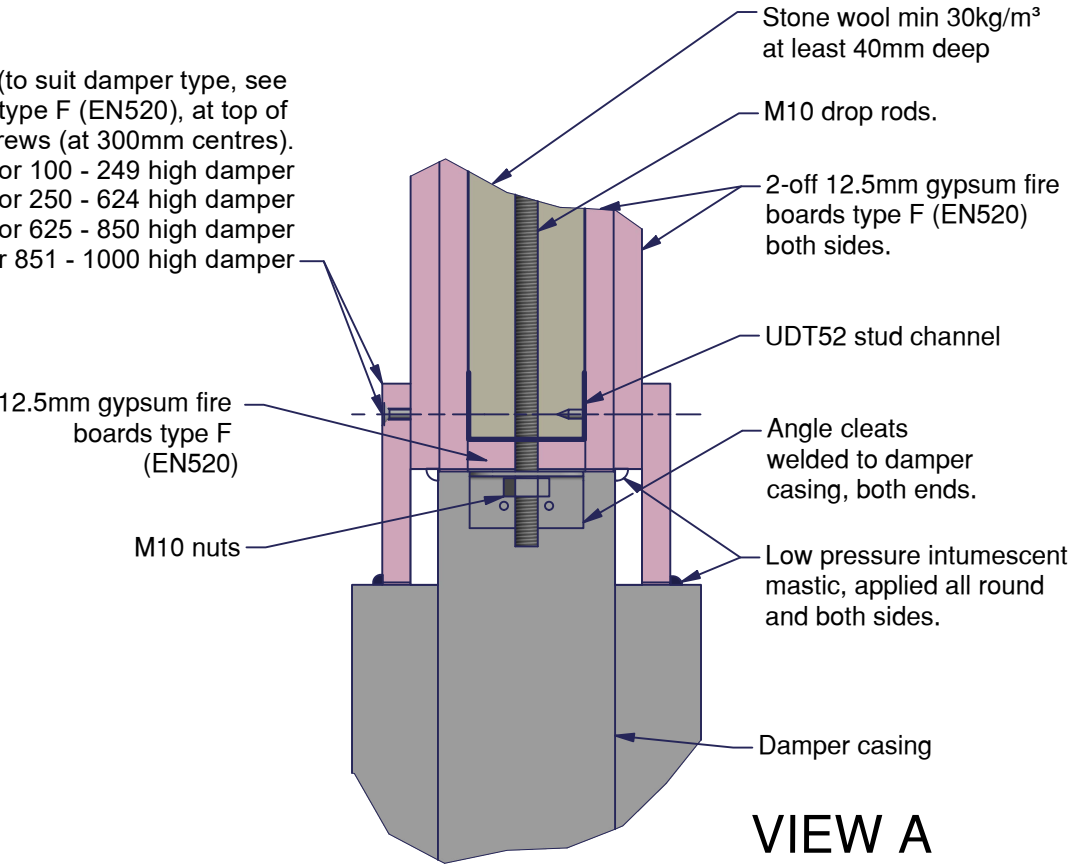


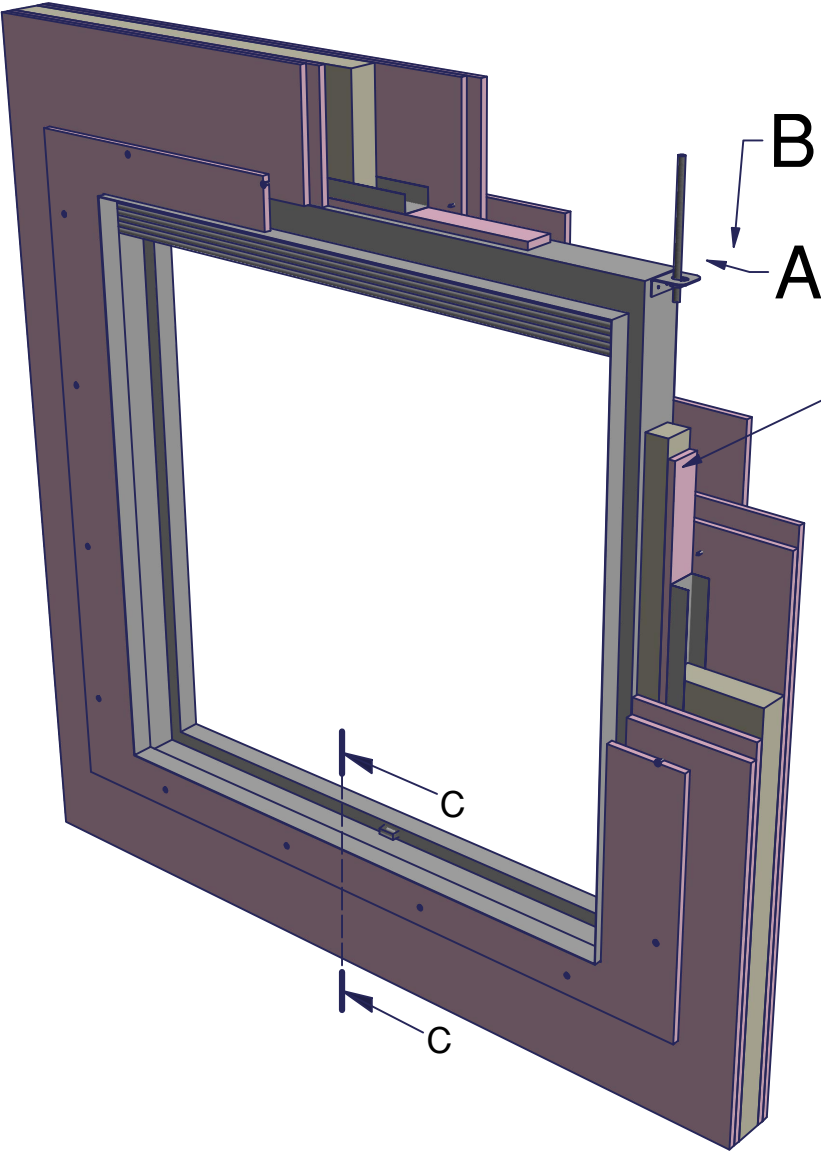
SECTION C-C



12.5mm x 100/125/150/175mm. (to suit damper type, see below) gypsum fireboard type F (EN520), at top of damper fixed with drywall screws (at 300mm centres).
100 wide pattress for 100 - 249 high damper
125 wide pattress for 250 - 624 high damper
150 wide pattress for 625 - 850 high damper
175 wide pattress for 851 - 1000 high damper



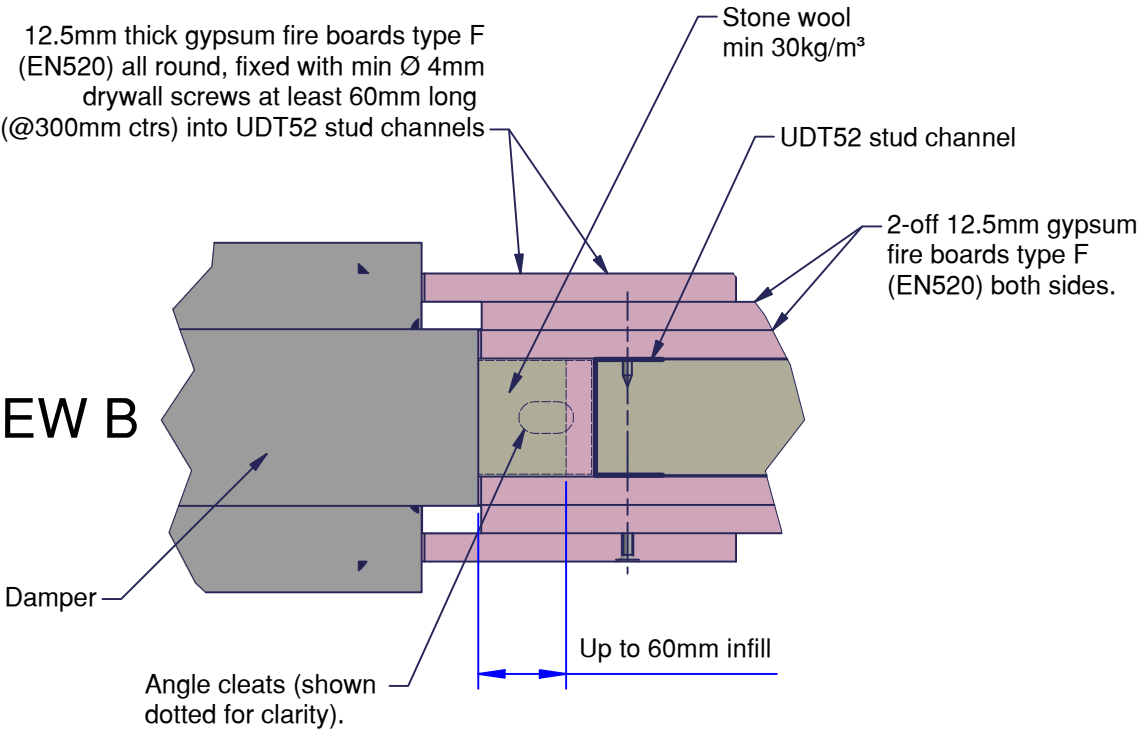
VIEW A



12.5mm gypsum fire boards type F (EN520)

12.5mm thick gypsum fire boards type F (EN520) all round, fixed with min Ø 4mm drywall screws at least 60mm long (@300mm ctrs) into UDT52 stud channels

VIEW B



Installation Detail

If your proposed installation details differ from that shown here, please discuss this with the authority having jurisdiction, referencing this documentation.

Deviation from this drawing requires approval of the relevant authority.

Connecting ductwork omitted for clarity. Ductwork must be independently supported. There must be an appropriate break-away joint between the damper and the connecting ductwork on both sides of the installation.

A minimum of 200mm between fire dampers installed in separate ducts and 75mm between fire damper and construction elements/edges needs to be observed unless otherwise specified in the drawing.



SCAN ME

Please refer to the DoP for latest classifications for CE/UKCA compliance and the Installation, Operation and Maintenance Guide

F	ECN2227	JPM	13/04/22
E	ECN1999	MJB	04-11-20
D	EC1830	RTC	20/03/18
C	EC1770	MJB	20-02-18
Rev:	Comments:	By:	Date:
Drawn By:	swehrle	Date:	03/10/2005
Checked By:	Kimberley.M	Date:	13/04/2022
Approved By:	Gore.S	Date:	13/04/2022

Description:
**VERTICAL APPLICATION
FIRE SHIELD DWFX-C IN
PLASTERBOARD WALL**

Damper Size Range (mm)
100 x 100 to 1250 x 1000



Reference No: AAF10709	Sheet 1 of 1	Rev F
---------------------------	-----------------	----------