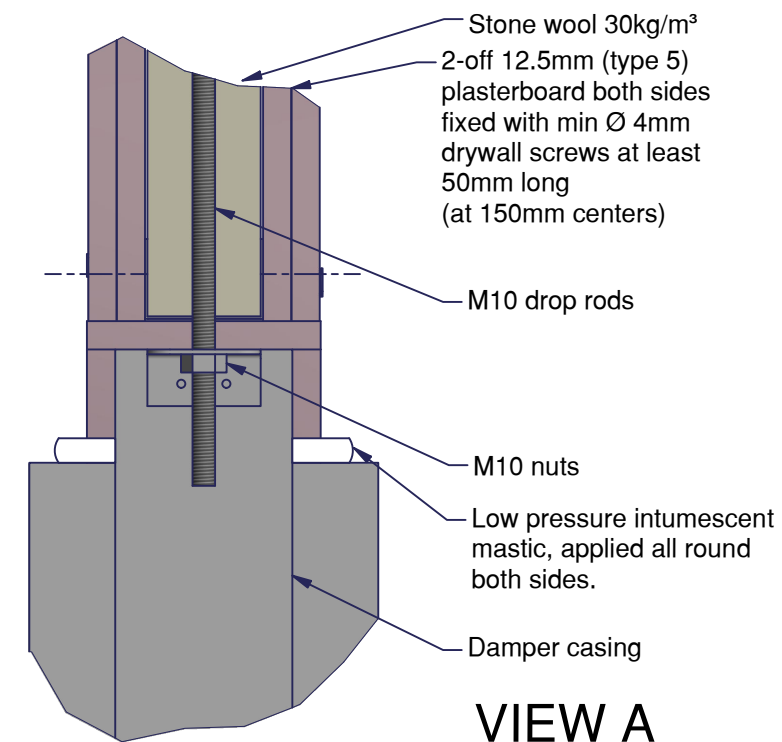
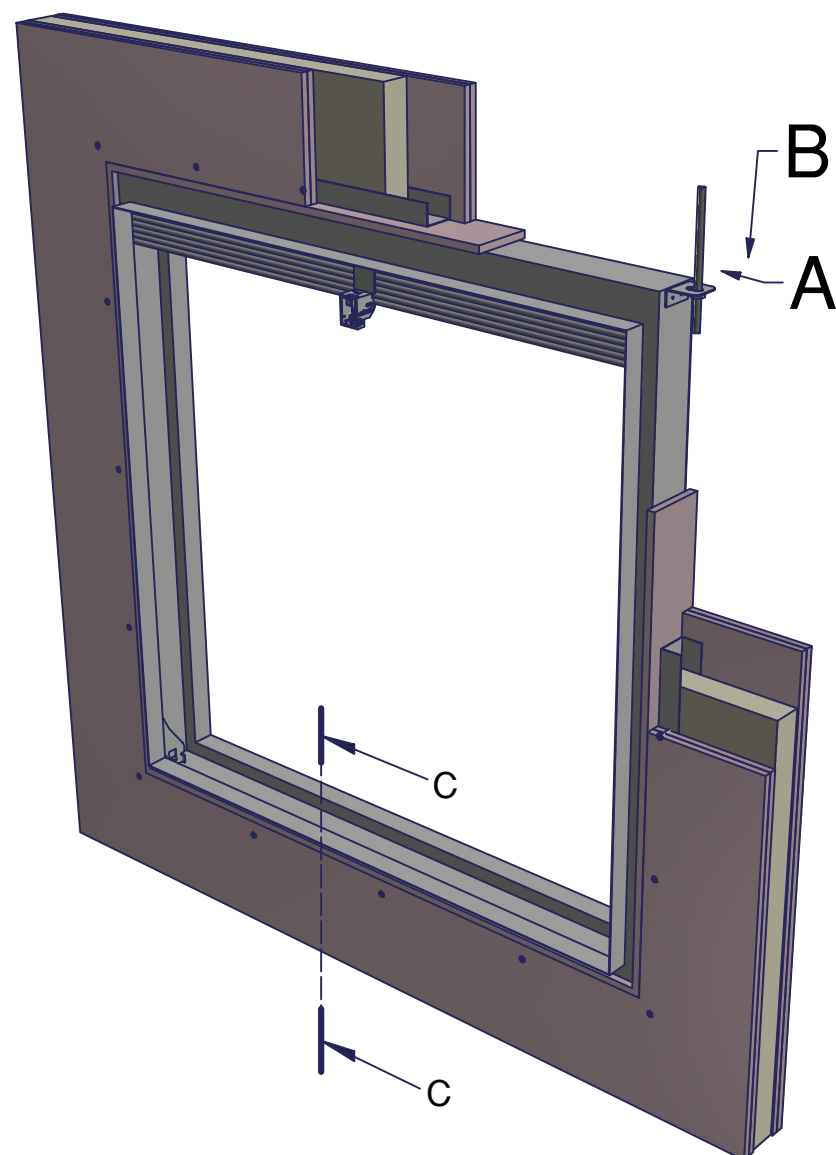


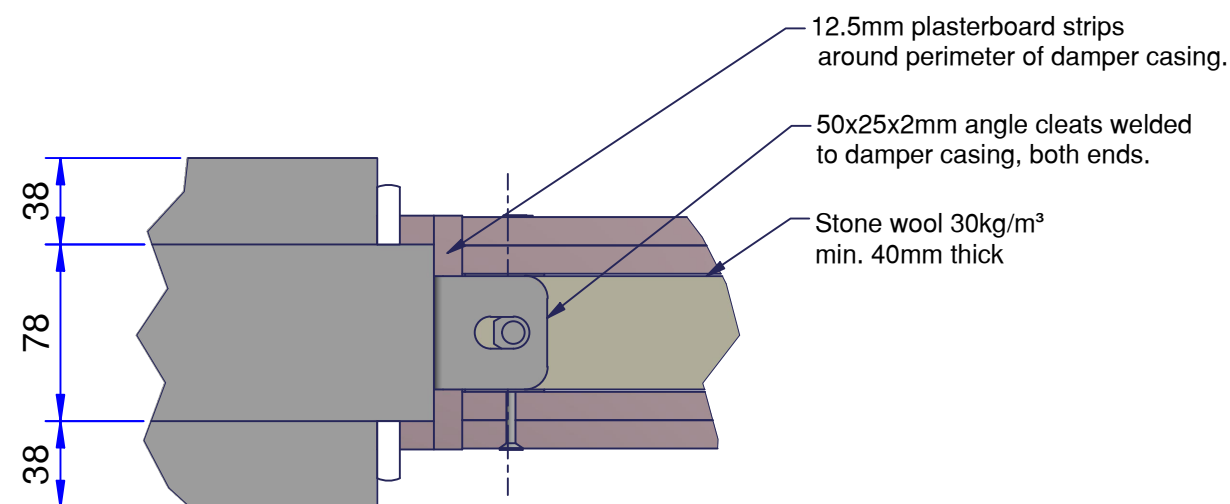
SECTION C-C

Low pressure intumescent mastic, applied all round both sides.

min 100mm thick wall



VIEW A



VIEW B

Installation Detail

If your proposed installation details differ from that shown here, please discuss this with the authority having jurisdiction, referencing this documentation.

Deviation from this drawing requires approval of the relevant authority.

Connecting ductwork omitted for clarity. Ductwork must be independently supported. There must be an appropriate break-away joint between the damper and the connecting ductwork on both sides of the installation.

A minimum of 200mm between fire dampers installed in separate ducts and 75mm between fire damper and construction elements/edges needs to be observed unless otherwise specified in the drawing.



SCAN ME

Please refer to the DoP for latest classifications for CE/UKCA compliance and the Installation, Operation and Maintenance Guide

D	ECN2227	JPM	13/04/22
C	ECN1999	MJB	04-11-20
B	EC1830	RTC	20/03/18
A	EC1770	MJB	20-02-18
Rev:	Comments:	By:	Date:

Drawn By: S. Wehrle Date: 08/11/2011

Checked By: Kimberley.M Date: 13/04/2022

Approved By: Gore.S Date: 13/04/2022

Description:

**VERTICAL APPLICATION
FIRE SHIELD DWFX-C IN
PLASTERBOARD WALL**

Damper Size Range (mm)
100 x 100 to 1250 x 1000



Reference No: AAF10723	Sheet 1 of 1	Rev D
---------------------------	-----------------	----------