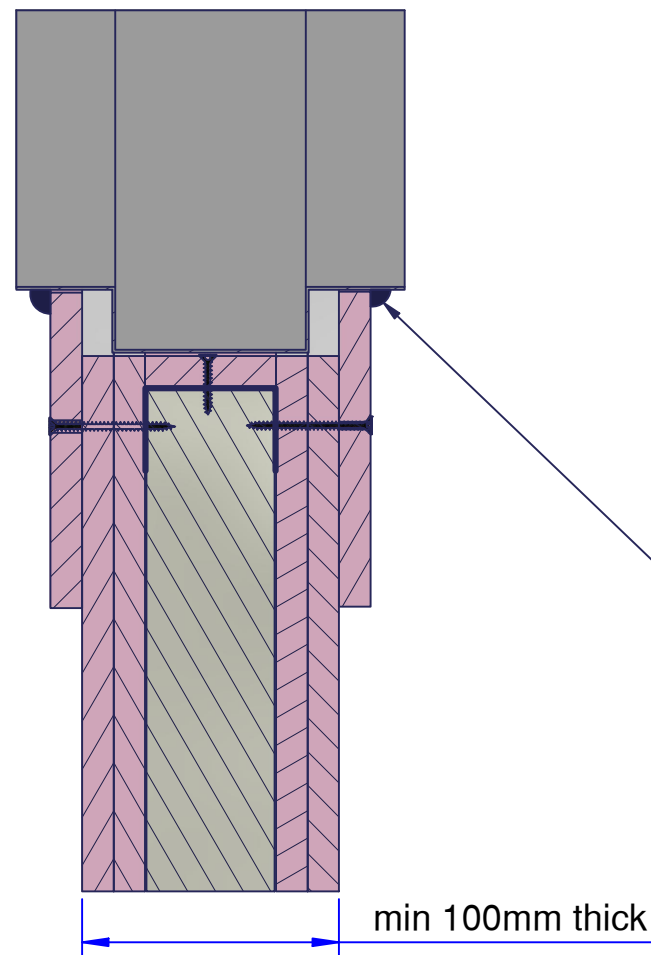


SECTION C-C



Supporting Construction

Fire rated steel fixing and washer 6mm x 60mm. min.

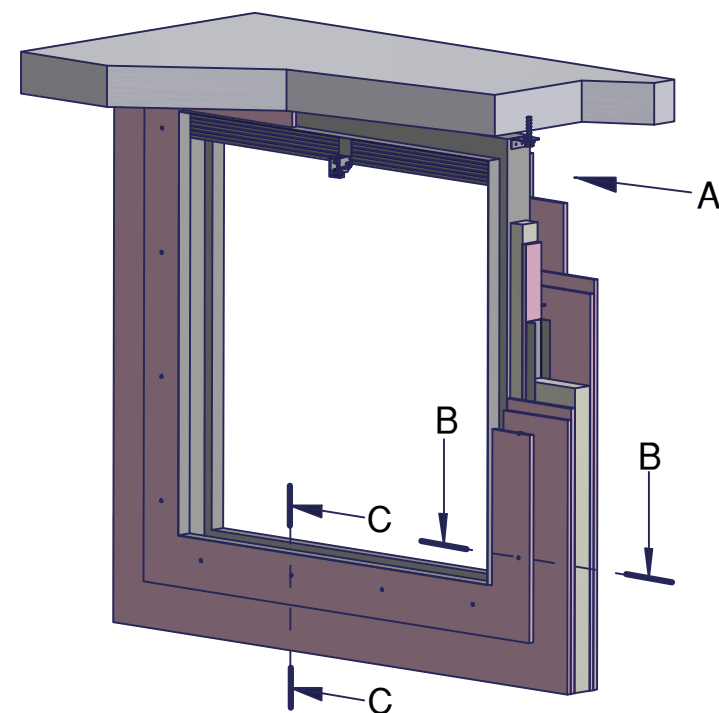
50mm

Diameter 5-10mm. of low pressure intumescent mastic, applied in a wavy line along top edge of damper as gap filler.

VIEW A

Damper

5mm. bead of low pressure intumescent mastic, applied all round & both sides.



5mm. bead of low pressure intumescent mastic, applied on three edges & both sides.

Stone wool min 30kg/m³

12.5mm x 125mm gypsum fire board type F(EN520) on three sides, fixed with min Ø 4mm drywall screws, at least 60mm long (@300mm. ctrs) into stud channels.

Damper

60 min. wall in accordance with BS EN1363-1

Stone wool min 30kg/m³ min. 40mm thick

Stud channel UTD 52min (Group B & C) in accordance with BS EN1363-1

12.5mm gypsum fire boards type F (EN520)

Up to 60mm. infill

SECTION B-B

actionair by Swegon

© Swegon Air Management Limited
South Street, Whitstable, Kent CT5 3DU
Tel: +44 (0)1227 276100
Email: actionair@swegon.com
www.swegon.com/uk

Installation Detail

If your proposed installation details differ from that shown here, please discuss this with the authority having jurisdiction, referencing this documentation.

Deviation from this drawing requires approval of the relevant authority.

Connecting ductwork omitted for clarity. Ductwork must be independently supported. There must be an appropriate break-away joint between the damper and the connecting ductwork on both sides of the installation.

A minimum of 200mm between fire dampers installed in separate ducts and 75mm between fire damper and construction elements/edges needs to be observed unless otherwise specified in the drawing.



SCAN ME

Please refer to the DoP for latest classifications for CE/UKCA compliance and the Installation, Operation and Maintenance Guide

E	ECN2227	JPM	29/04/22
D	ECN1947	MJB	07-10-19
C	ECN1922	MJB	12-04-19
B	EC1830	RTC	20/03/18
A	EC1770	MJB	20-02-18
Rev:	Comments:	By:	Date:
Drawn By:	swehrle	Date:	14/01/2016
Checked By:	Kimberley.M	Date:	29/04/2022
Approved By:	Gore.S	Date:	29/04/2022

Description:

**VERTICAL APPLICATION
FIRE SHIELD DWFX-C, IN
PLASTERBOARD WALL AGAINST
SUPPORTING CONSTRUCTION**

Damper Size Range (mm)
100 x 100 to 1250 x 1000



Reference No:	Sheet	Rev
AAF11682	1 of 1	E