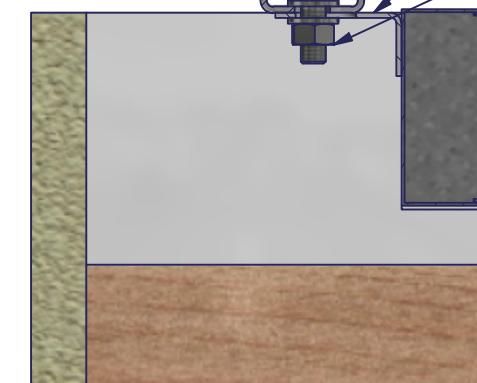


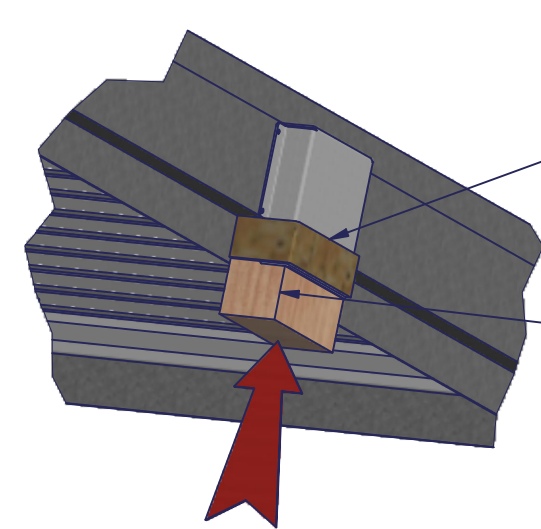
1.5mm. min. unistrut supporting damper either side, by others

Cleat

Damper bolted to unistrut via four cleats (min. M10).



Section B-B
Damper fixing



Sealing interface opening on shroud

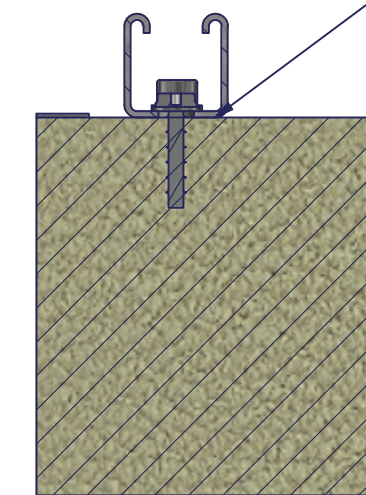
Cover the two snap-lok holes on these two faces on the outside of the shroud using another piece of shuttering. Approx dimensions 5mm thick x 35mm wide and duct taped to retain it in place.

50mm thick shuttering width 105 x height 80mm infill placed in opening between interface and spigot and up to the body of damper. Temporarily fitted before adding mortar to protect against penetration of mortar into interface shroud.

Mortar sand and cement mix 4:1 to 100mm thickness. Fire refractory mortars can also be used.
Do not fill above damper casing

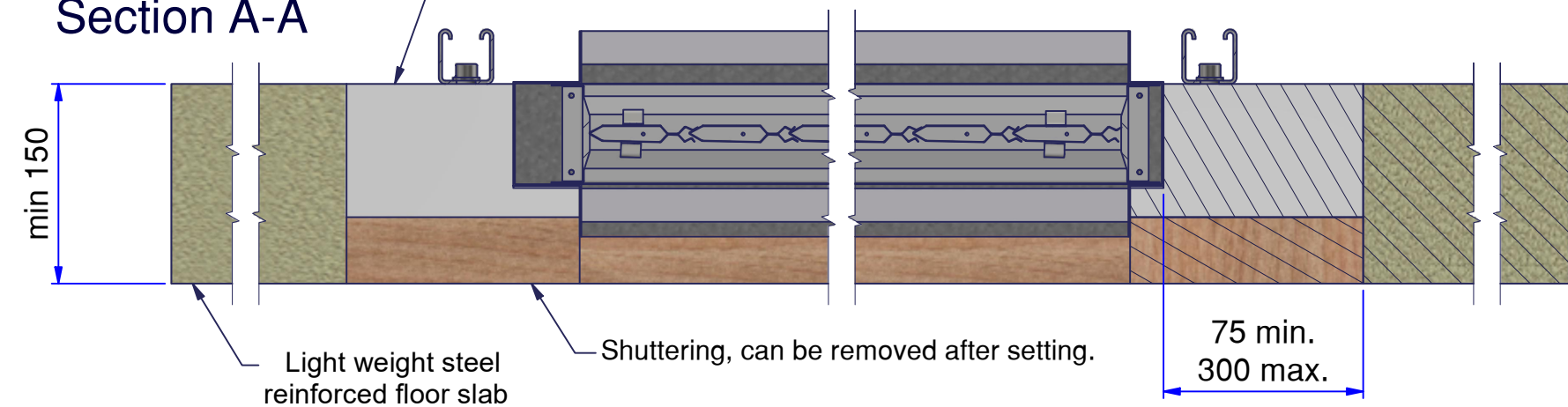
Typically - Unistrut fixed to slab to support damper whilst mortar is setting.

This support can be removed after mortar has set.



Section C-C
Unistrut fixing

Section A-A



For installation instructions see document ED-AA-4.



Installation Detail

If your proposed installation details differ from that shown here, please discuss this with the authority having jurisdiction, referencing this documentation.

Deviation from this drawing requires approval of the relevant authority.

Connecting ductwork omitted for clarity. Ductwork must be independently supported. There must be an appropriate break-away joint between the damper and the connecting ductwork on both sides of the installation.

A minimum of 200mm between fire dampers installed in separate ducts and 75mm between fire damper and construction elements/edges needs to be observed unless otherwise specified in the drawing.



SCAN ME

Please refer to the DoP for latest classifications for CE/UKCA compliance and the Installation, Operation and Maintenance Guide

C	ECN2227	MJB	13/04/22
B	ECN2159	MJB	06-09-21
A	ECN1932	MJB	05-11-20
Rev:	Comments:	By:	Date:
Drawn By:	M. Bushell	Date:	03/07/2019
Checked By:	Kimberley.M	Date:	13/04/2022
Approved By:	Gore.S	Date:	13/04/2022

Description:
HORIZONTAL APPLICATION
SMOKE SHIELD + COMPOUND SEAL - SPAN, ACCESS SIDE BELOW
Damper Size Range (mm)
200 x 200 to 1000 x 1000

Reference No:	Sheet	Rev
AAF12864	1 of 2	C