

Installation Detail

If your proposed installation details differ from that shown here, please discuss this with the authority having jurisdiction, referencing this documentation.

Deviation from this drawing requires approval of the relevant authority.

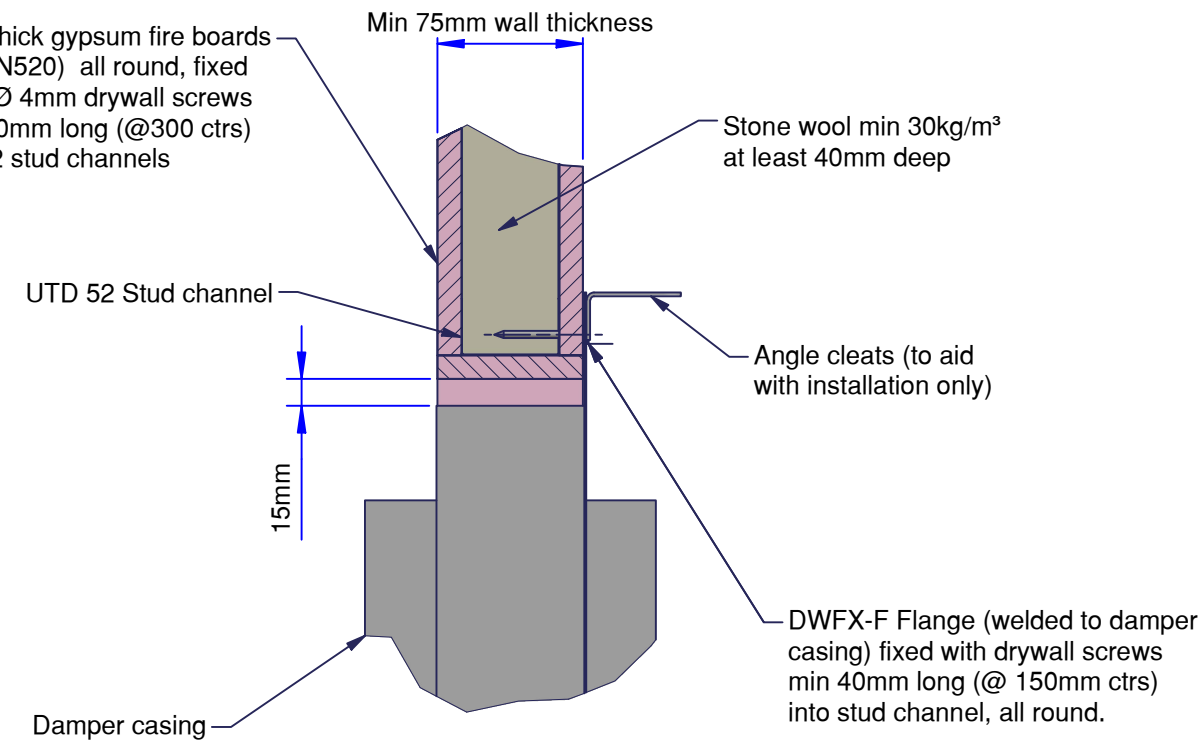
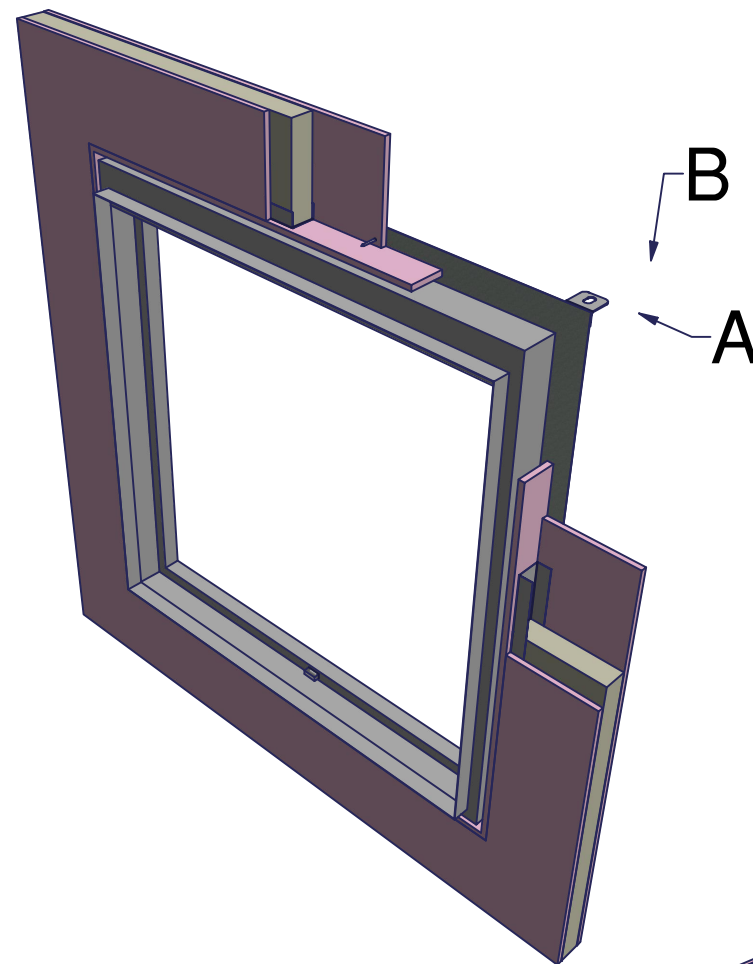
Connecting ductwork omitted for clarity. Ductwork must be independently supported. There must be an appropriate break-away joint between the damper and the connecting ductwork on both sides of the installation.

A minimum of 200mm between fire dampers installed in separate ducts and 75mm between fire damper and construction elements/edges needs to be observed unless otherwise specified in the drawing.



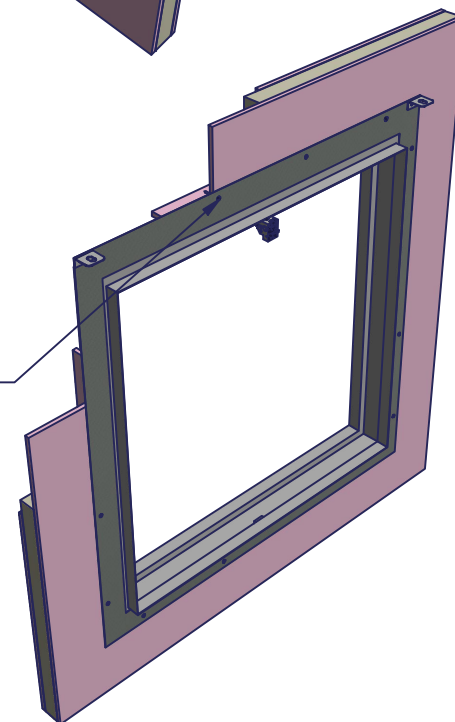
SCAN ME

Please refer to the DoP for latest classifications for CE/UKCA compliance and the Installation, Operation and Maintenance Guide

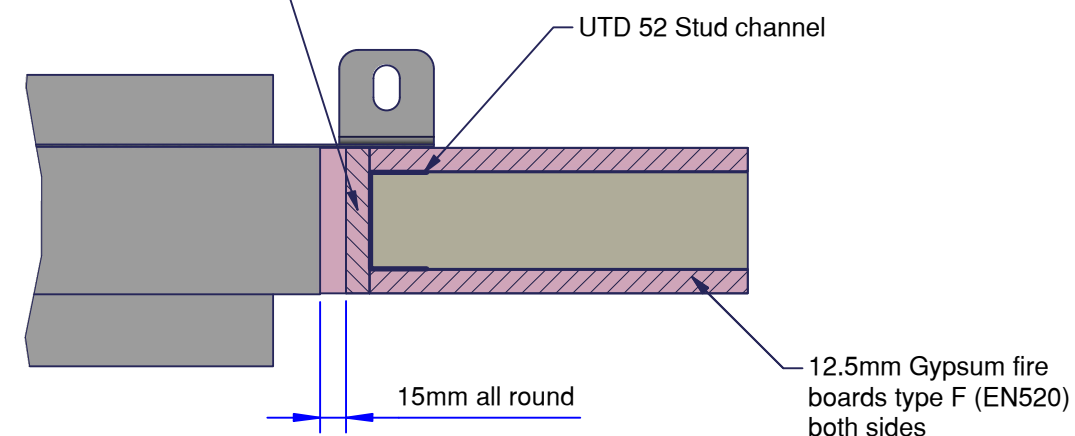


VIEW A

DWFX-F Flange (welded to damper casing) fixed with min Ø 4mm drywall screws at least 40mm long (@ 150mm ctrs) into stud channel, all round.



12.5 x 75mm gypsum fire boards type F (EN520) to line entire opening fixed with drywall screws into UDT52 section.



**VIEW B
(SIDE DETAIL)**

A	Initial Release	JPM	12/07/22
Rev:	Comments:	By:	Date:
Drawn By:	J.Mount	Date:	16/06/2022
Checked By:	M.Kimberley	Date:	12/07/2022
Approved By:	S.Gore	Date:	12/07/2022

Description:

**VERTICAL APPLICATION
FIRE SHIELD DWFX-F IN
PLASTERBOARD WALL**

Damper Size Range (mm)
100 x 100 to 1250 x 1000

Reference No:	Sheet	Rev
AAF13440	1 of 1	A

