



A Swiss innovation for the ventilation of residential buildings

SWEGON CUBE

Resident information



SWISS+MADE

Swegon



Advantages for the residents

Why you should choose the CUBE

- No placement of the ventilation in the flat, so less space required
- Euro Certification ECO Design A+
- Maintenance, servicing and repair possible at any time without entering the flat

Functional description of the Swegon CUBE controller

- The Swegon CUBE is installed on the roof of the building. To control the function of the device, a step timer is required, which is accessible in the living room.
- The Swegon CUBE can be operated on 3 operating levels, namely: Level 1: Standard - Level 2: Increased air volume - Level 3: Party/Cooking
- The step timer has a push button with the step sequence 1-2-3-1, after a predefined time (normally 2 hours) the step timer goes back to step 1. This causes the green LEDs on the step timer to flash
- If no green LED is lit, the CUBE has a fault

The step timer has a push button with the step sequence:

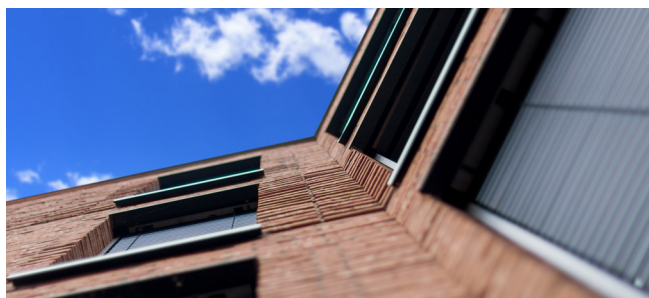
1 - 2 - 3 - 1



General information about the CUBE and Swegon

Swiss Made

If more than 60% of the added value remains in Switzerland, you can call it a Swissmade product - and this is the case with the CUBE!



The Swegon company

As a producer of sophisticated and holistic system solutions, Swegon offers you a healthy and comfortable indoor climate - safe, environmentally friendly and economical.





Advantages of comfort ventilation

Why should you opt for comfort ventilation?

Good thermal insulation on the roof, façade and windows ensures that there are no more draughts through all the gaps and cracks, the walls stay warm and the rooms no longer feel clammy. However, for a healthy indoor climate and cosy living comfort, the air in the house must also be able to renew itself regularly. The heat loss caused by permanently tilted windows is far too cost-intensive.

For those who do not want to or cannot ventilate briefly and intensively at least three times a day, controlled ventilation systems, also known as comfort ventilation, offer an elegant solution. They use a pipework system to provide continuous fresh air even when the windows are closed. Odours, vapours, CO2 and moisture are reliably removed. If required, a filter even protects allergy sufferers from pollen.

Comfort ventilation as opposed to window ventilation

	Comfort ventilation	Window ventilation
Controlled air exchange	✓	✗
Moisture removal	✓	~
Heating of supplied fresh air	✓	✗
Heat saving	✓	✗

Table: Comparison of comfort ventilation and window ventilation



Advantages of comfort ventilation

What does comfort ventilation do and what doesn't it do?

Comfort ventilation guarantees a continuous supply of fresh air even when the windows are closed. This increases living comfort, reliably prevents moisture damage and protects against outside noise. It also supplies purified air and thus helps to prevent respiratory illnesses and allergies. An additional built-in filter can filter out unpleasant pollen from the incoming fresh air for allergy sufferers.

A study by the Federal Office of Public Health (FOPH) recently confirmed the hygienic quality and harmlessness of such ventilation systems (in terms of mould or bacterial growth) and concluded that the indoor air quality is even better than in homes without mechanical ventilation. At the same time, comfort ventilation has been proven to increase the long-term value of the building and its rentability. However, according to the FOPH study, home ventilation systems are not suitable for removing cigarette smoke or furniture paint vapours. It is also not an air conditioning system: the air is generally neither cooled nor actively heated or humidified.

How does controlled ventilation work?

The principle of controlled ventilation is simple:

used air from the bathroom, toilet or kitchen is extracted and fresh air is channelled into the living rooms and bedrooms. The fresh air is heated by the exhaust air at a heat exchanger and blown into the living rooms via pipes.

Important

To protect the home (moisture damage), the ventilation must always be switched on. If the ventilation is switched off for long periods in the winter months, damage may occur to the ventilation unit on the roof

In an emergency (fire, chemical accident), the comfort ventilation must be switched off at the fuse panel..

BERN

Swegon AG
Kernenriedstasse 1
CH-3421 Lyssach

ZÜRICH

Swegon AG
Wiesenstrasse 5
CH-8603 Schwerzenbach

LAUSANNE

Swegon SA
Route de Prilly 23
CH-1023 Crissier

LUGANO

Swegon SA
Via Cantonale 2B
CH-6928 Manno

Feel good **inside**