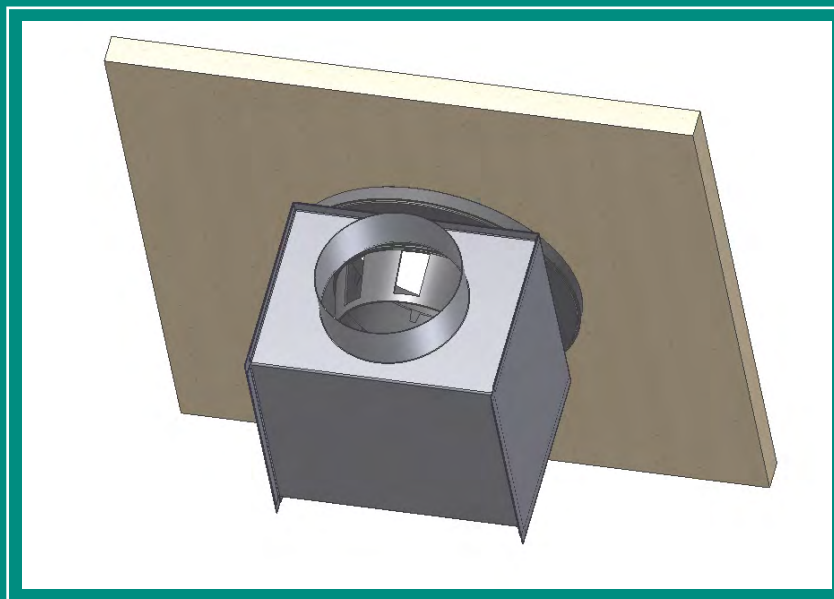


Operating and Maintenance

WFO-*P Series Floor Diffuser (Tile Installation with plenum)



WFO-*P Series Floor Diffuser

Product Description

WFO Floor Diffusers

Tools Required

- 1 x Medium size flat blade screwdriver
- 1 x Medium cross head screwdriver
- 1 x Woodworking router or jigsaw

Installation instructions:

It should be noted that installation of this product is only recommended in tile thickness range of 23.5mm to 50mm.

For a trouble free Installation of the WFO-*P Series Floor Diffuser, follow these simple instructions:

1- Prior to installation, remove the diffuser disc and damper / dirt tray from the diffuser basket.

2- Mark out on the tile the required location of the diffuser, then using the router or jigsaw cut a 211mm diameter hole as shown in **(Figures 1)**.

3- Take the mounting collar and place it face down on the plenum box opening. Align the fixing holes up and secure using the self tapping screws supplied (see **Figures 2 & 2a)**.

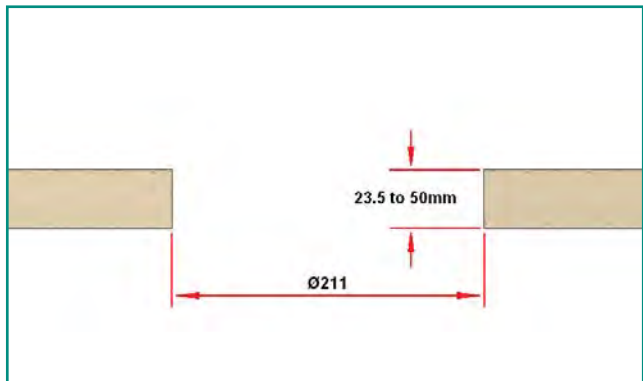


Figure 1: Hole details

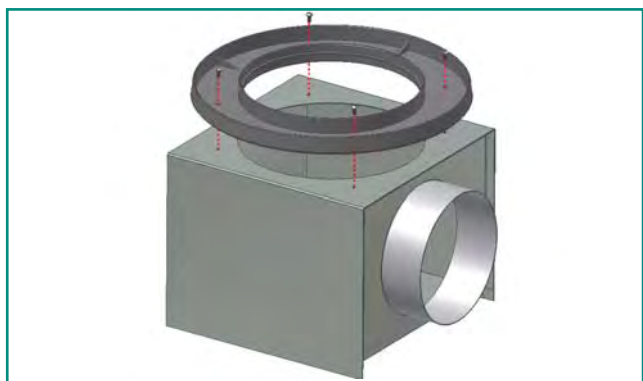


Figure 2: Place the mounting ring on top of plenum box

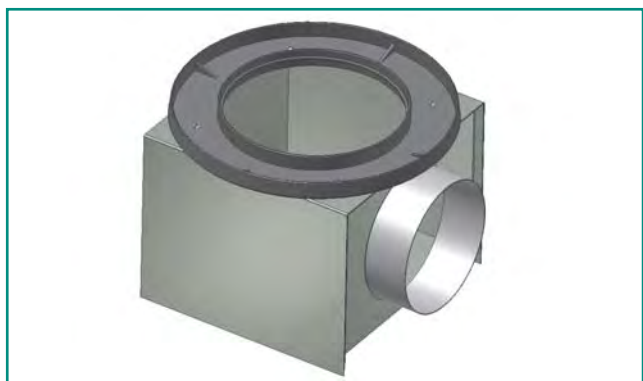


Figure 2a: Assembled plenum

WFO-*P Series Floor Diffuser

Installation instructions:

4- Place diffuser basket in the tile opening, and engage with the mounting ring on the top of the plenum (**Figures 3**). Screw the basket into the mounting ring by rotating it in a clockwise direction.

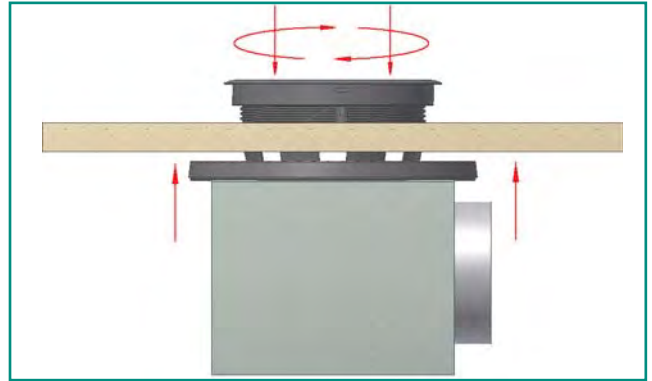


Figure 3: Screw basket into mounting ring

5- Continue screwing in the basket until its flange is sitting flush with the tile face (**Figures 3a**), whilst ensuring there is no debris trapped between the Flange and Tile face. Check the alignment of the spigot on the plenum and adjust as necessary prior to securing the plenum and basket in place (**Figures 3b**).

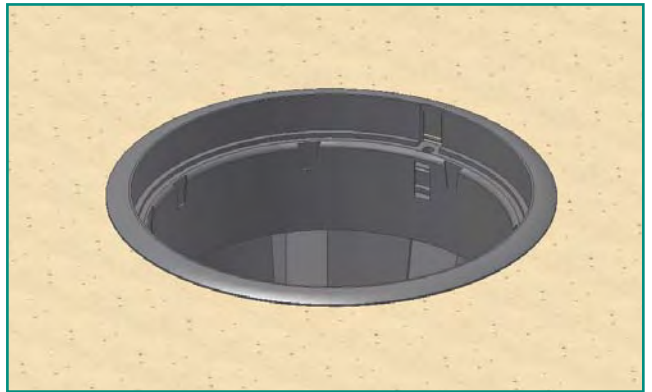


Figure 3a: until the basket is flush

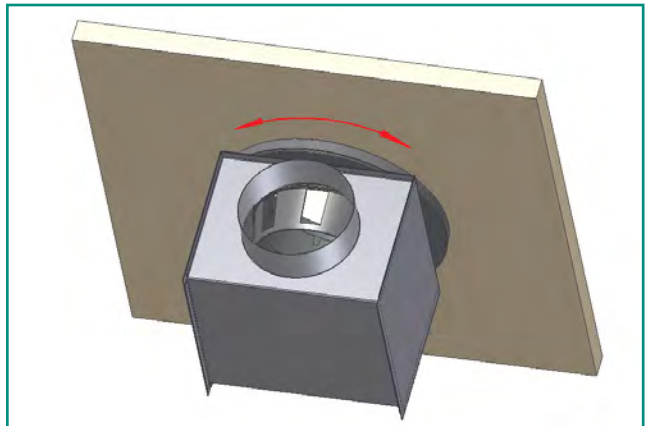


Figure 3b: Adjust spigot as required

6- Lay the Tile in the floor in the desired orientation and connect up the ductwork to the plenum as required.

WFO-*P Series Floor Diffuser

Commissioning

The WFO-*P Series Diffuser has the ability to control airflow by rotating the damper / dirt tray inside of the diffuser basket. The basket has a series of 8 dovetail shaped slots around its internal circumference for the installation of a location peg, which is used to align the damper to the required position.

1- Install the damper in the diffuser basket and rotate it, and align the damper location notch (marked with red arrow in **Figures 4**) with each of the 8 dovetail slots until you find the one that nearest matches your air opening slot requirements.

Please note that Waterloo recommend that the damper is positioned in the fully open position for installation.

2- Remove the damper and install the location pin in the dovetail slot as shown in (**Figures 5**).

3- Reinstall the damper, taking care to align the notch in the damper lip with the location peg in the basket (**Figures 6**).

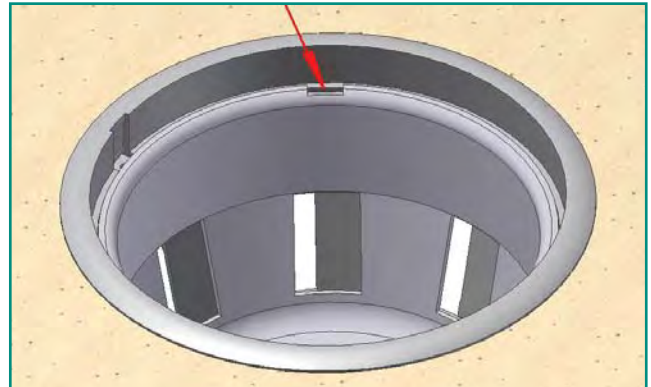


Figure 4: Install the damper and rotate until correct dovetail position is found

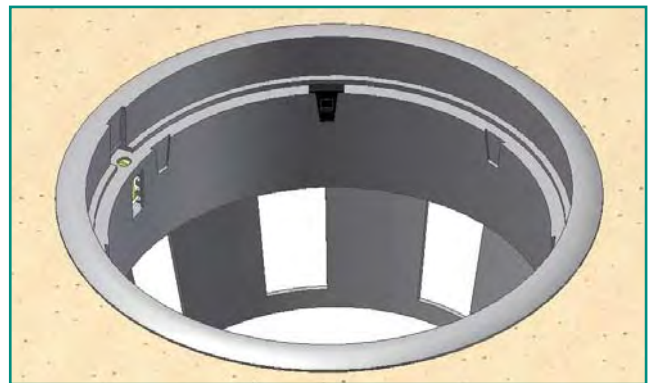


Figure 5: Install location peg in basket

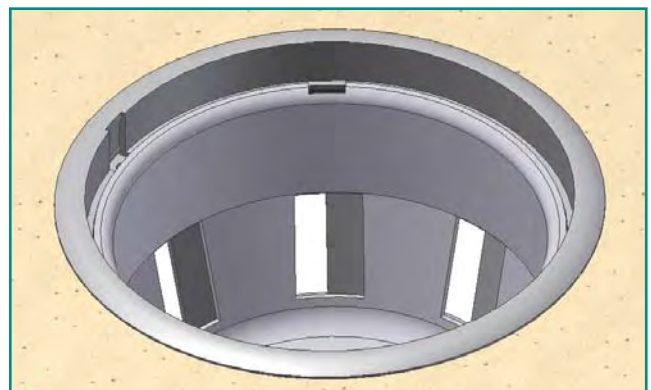


Figure 6: Install Damper in Basket

WFO-*P Series Floor Diffuser

Commissioning

4- Install the diffuser disc in the basket, taking care to locate the location pip on the disc with the location slot on the basket (**Figure 7**).

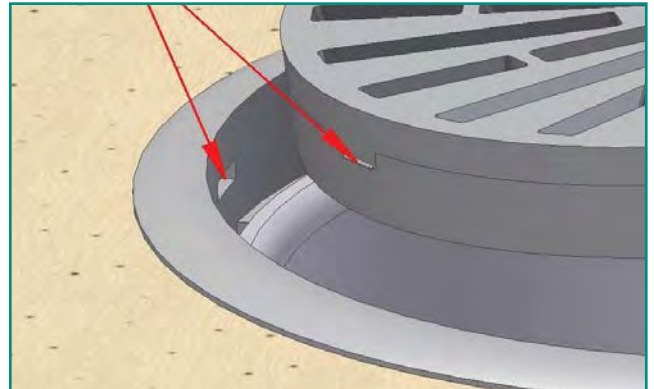


Figure 7: Location pip and slot

5- Lower the disc into the basket, taking care to centre the alignment tab on the upper face with the slot the basket (**Figure 8**).

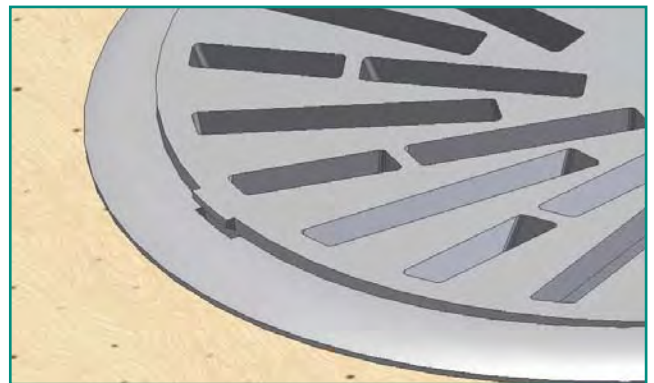


Figure 8: Alignment tab and slot

6- Finally, push home disc and it's complete! (**Figure 9**).

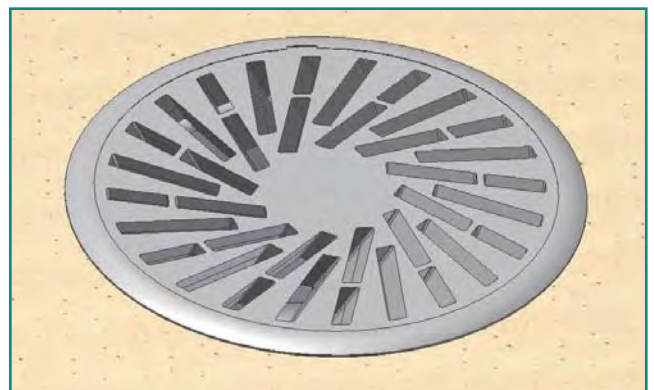


Figure 9: All finished!

WFO-*P Series Floor Diffuser

Cleaning and Maintenance:

1- To remove the diffuser disc, place the hook tool provided through one of the slots in the disc face and rotate it through 90 degrees (**Figures 10**).

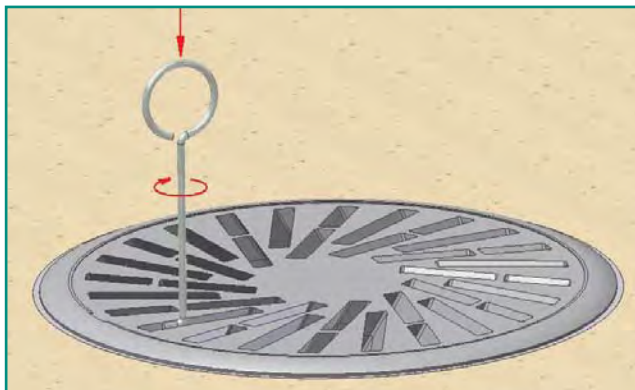


Figure 10: Insert hook & rotate 90 degrees...

2- Pull the hook in an upwards direction to lift the disc (**Figures 11**).

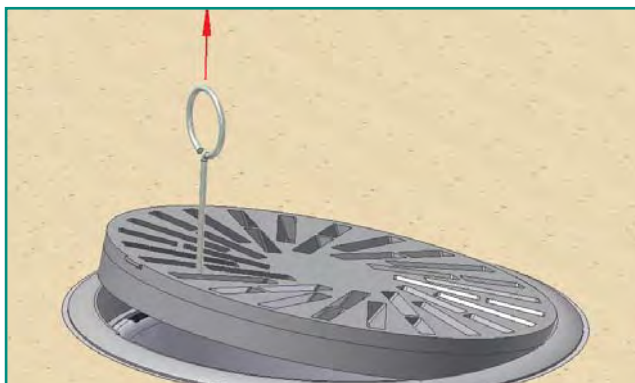


Figure 11: ...then pull hook upwards

3- Remove the damper / dirt tray and discard its contents (**Figures 12**).

4- To clean, simply wash the diffuser disc and damper / dirt tray in soapy water and leave to dry.

5- Reinstall damper / dirt tray and disc as per previous instructions.

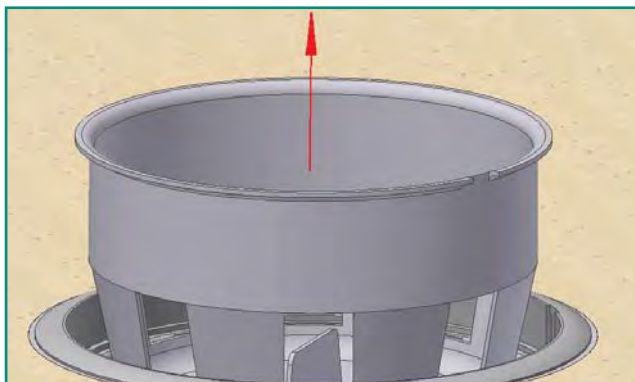


Figure 12: Remove damper / dirt tray

Waterloo Product Range

GRILLES

A complete range of products suitable for all wall, ceiling and floor applications. Most grilles are made from aluminium and have a range of fixed or moveable blades designed to give performance whilst remaining aesthetically pleasing to the eye. Grilles are made to customer specified sizes and colours (PPM/G); standard colour PPM9010 (20% Gloss White). The range is complemented by the Aircell range of polymer Grilles.



DIFFUSERS

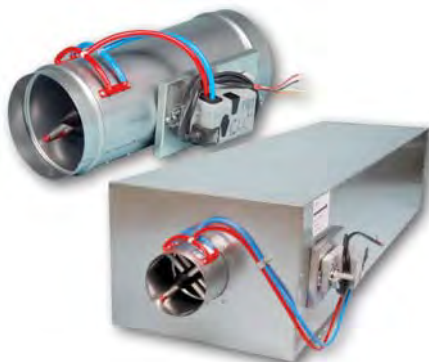
Designed to be installed in various ceiling systems, we have a complete range to suit both performance and aesthetical requirements. Most diffusers are made from aluminium and can be ordered with or without plenum boxes for easy duct work. Diffusers can be ordered in customer specified colours (PPM/G); standard colour is PPM 9010 (20% Gloss White). This range is complemented by the Aircell range of polymer Diffusers.



ACTIVE AND PASSIVE CHILLED BEAMS

The finest quality range of high output active beams, used for ventilated heating and cooling applications. These units have 4 pipe coils to allow heating and cooling circuits to run simultaneously, giving constant and responsive control. The design allows a large optimum capacity and also allows the customer to specify the nozzle type and pitch for individual circumstances.

Active beams are made from steel to a large range of customer specified sizes and as such are suitable for various different ceiling systems. Standard finish is PPM 9010, however other (PPM/G) colours are available on request.



AIR VOLUME CONTROL DAMPERS

Pressure independent Variable Air Volume and Constant Air Volume dampers made from zintec plate. Most volume dampers are regulated with an electronic motor and sensors and are calibrated to customer specifications before delivery.

The Constant Air Volume damper requires no power source as it is controlled via a mechanical device and calibrated before delivery. All volume dampers can be ordered with a single or double (insulation) skin.



EXTERNAL LOUVRES

A quality range of products for external wall applications. Made from aluminium, with birdscreen or insect screen options. All louvres are made to customer specified sizes and (PPM/G) colours; standard colour is PPM 9006.



DISPLACEMENT

A full range of recessed, semi-recessed, floor, wall and corner units providing high ventilation efficiency and excellent comfort. The very low pressure involved also offer quiet installations. Displacement units are available as wall or floor mounted, or indeed integrated within the architectural design.



Waterloo Air Products Ltd

Head Office:

Mills Road, Aylesford,
Maidstone, Kent ME20 7NB
Tel: +44 (0)1622 711 500
Fax: +44 (0)1622 710 648
email: sales@waterloo.co.uk
internet: www.waterloo.co.uk

Northern Office:

Hyde Park House, Cartwright Street,
Newton, Hyde SK14 4EH
Tel: +44 (0)161 367 1264
Fax: +44 (0)161 367 1262
email: sales@waterloo.co.uk
internet: www.waterloo.co.uk



FM 27823



EMS 590755

All products conform to the Terms and Conditions of Waterloo Air Products Ltd a copy of which are available upon request. Due to our continuous research and development programme, Waterloo Air Products Ltd reserve the right to alter products and prices without prior notification.

Copyright Waterloo Air Products Ltd 2019

Waterloo declare that, at the time of print, all products are in accordance with relevant directives, as identified by HEVAC and other European Organisations and will display the CE Marking where required.