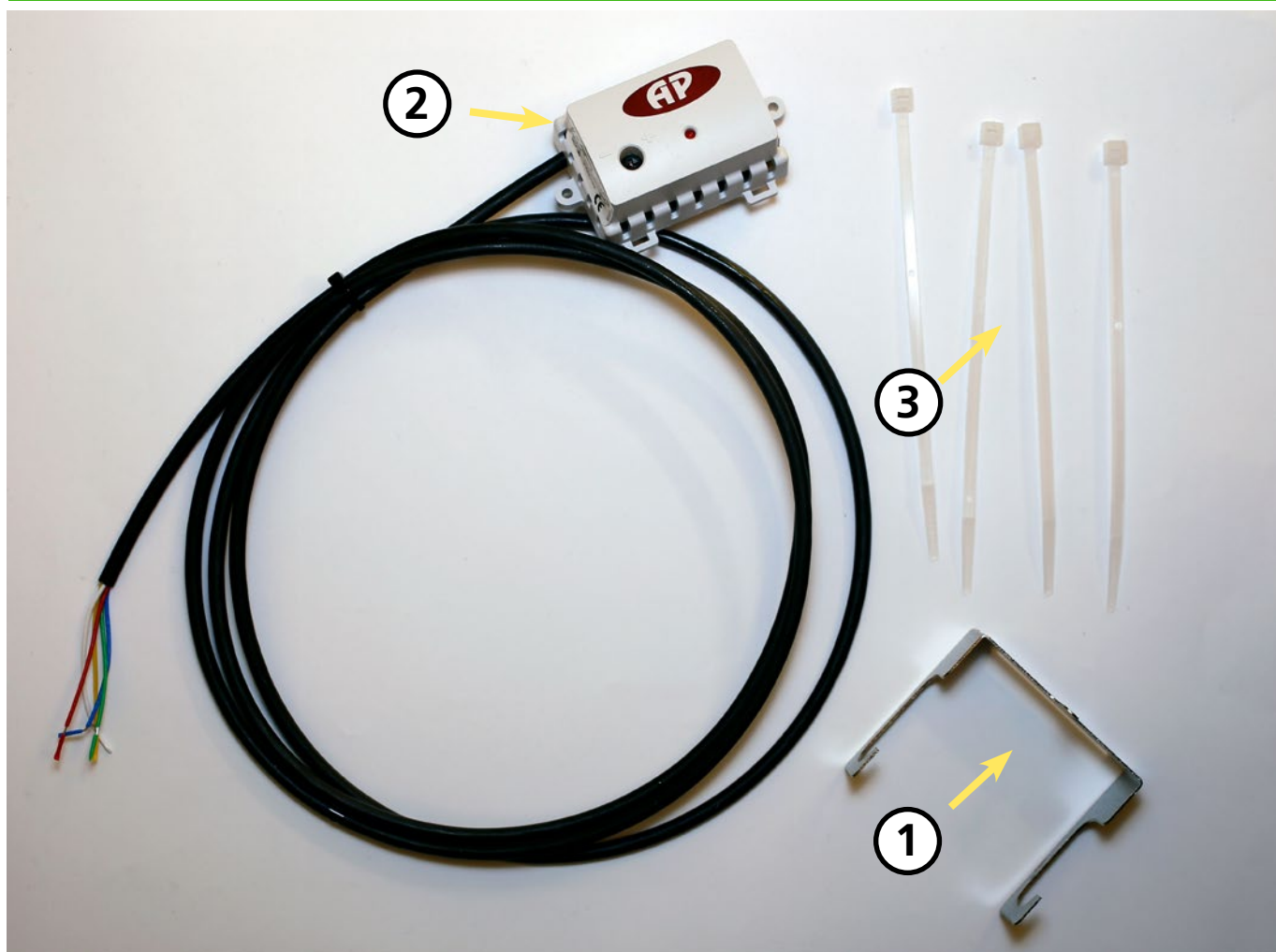


WCD2 PARASOLc

Installation – Condensation sensor

20181003



General description of the Condensation Sensor WCD2 Parasol.

The Sensor WCD2 Parasol is designed to meet the requirements to provide early warning of condensing conditions.

In case of a problem with the system the sensor is used as a safeguard to avoid condensation from the chilled beam.

The sensor operates on dew point temperature rather than a fixed value of relative humidity.

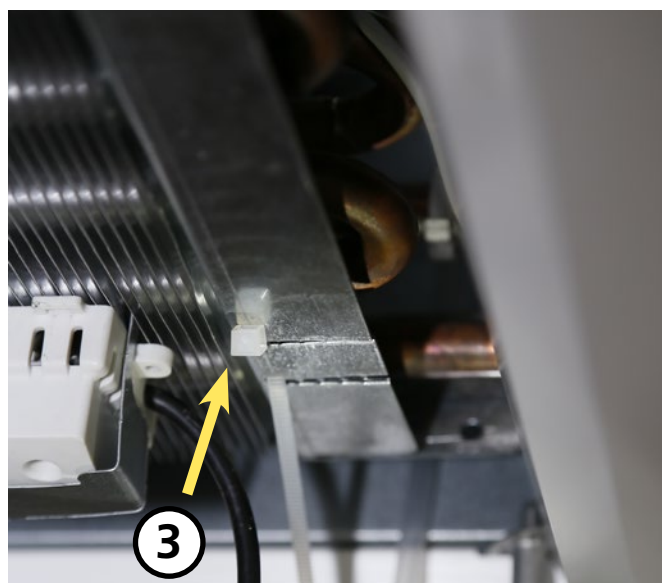
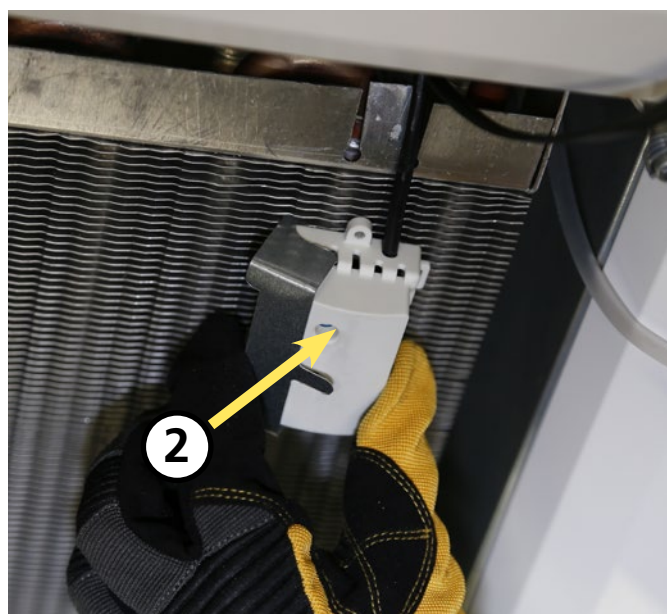
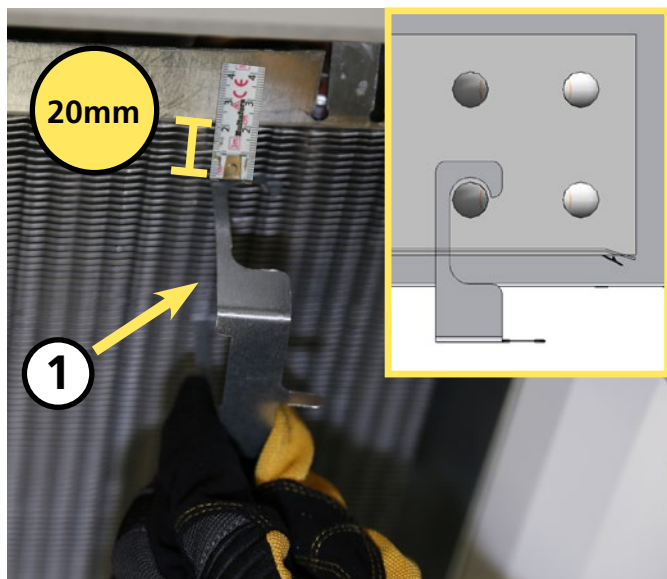
The dew point is calculated from a temperature compensated RH element and a high accuracy thermistor which are thermally bonded to the metal plate of the sensor.

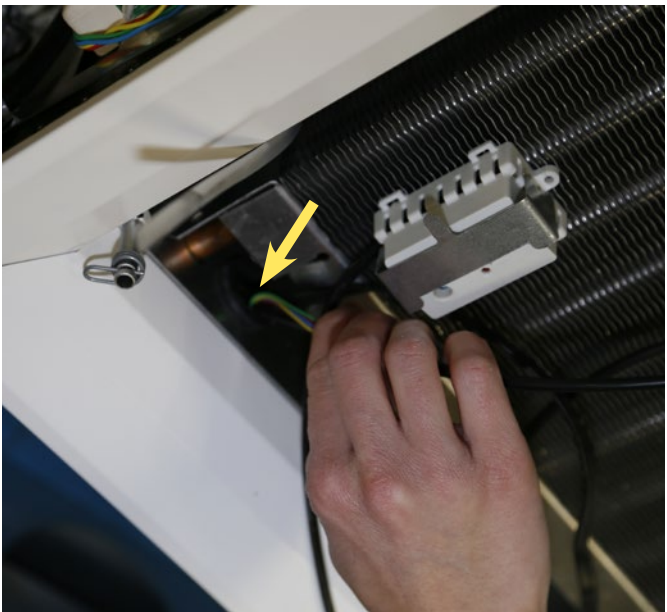
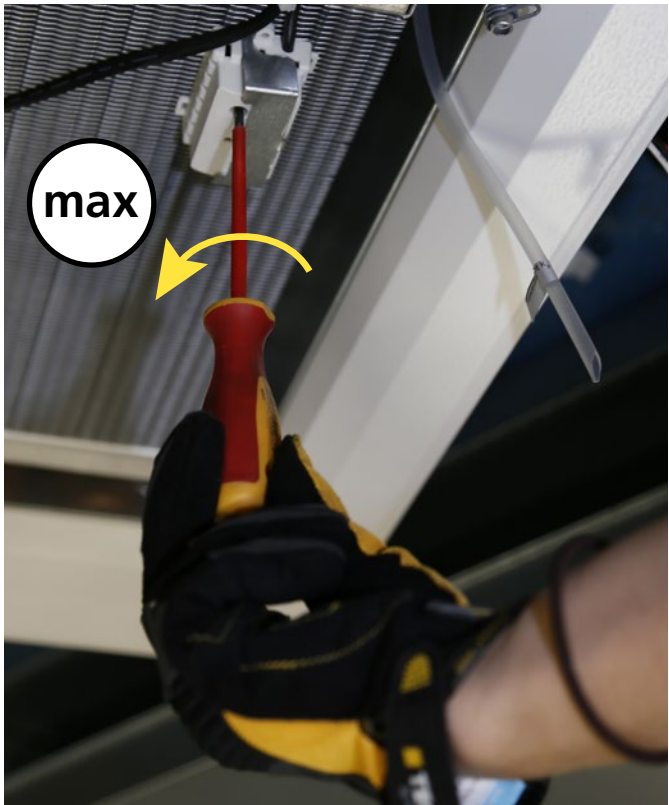
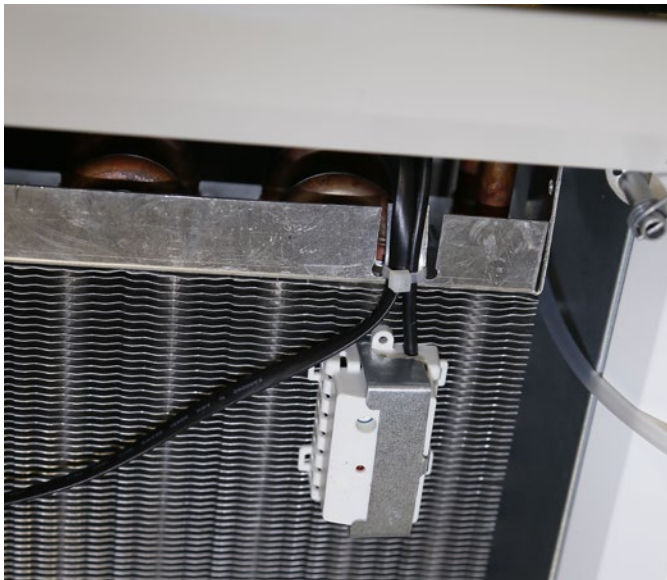
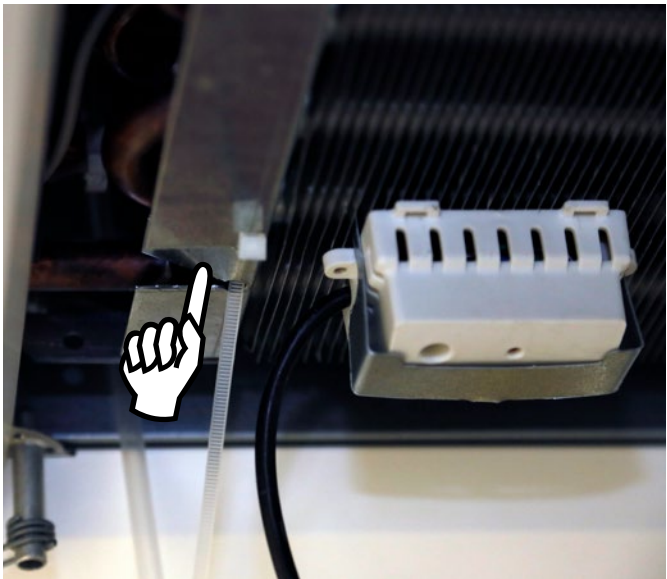
The volt-free contact relay in the sensor is activated when the dew point temperature is below the calculated dew point temperature (there is a safety factor included in the calculated dew point).

LED Indication.

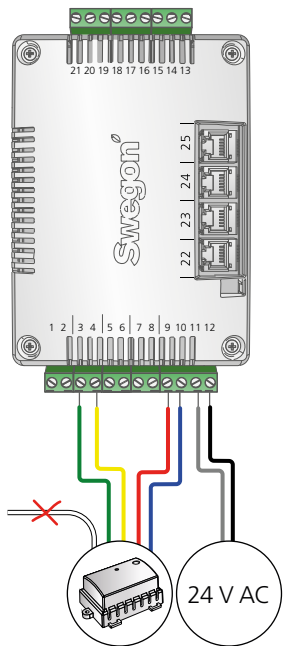
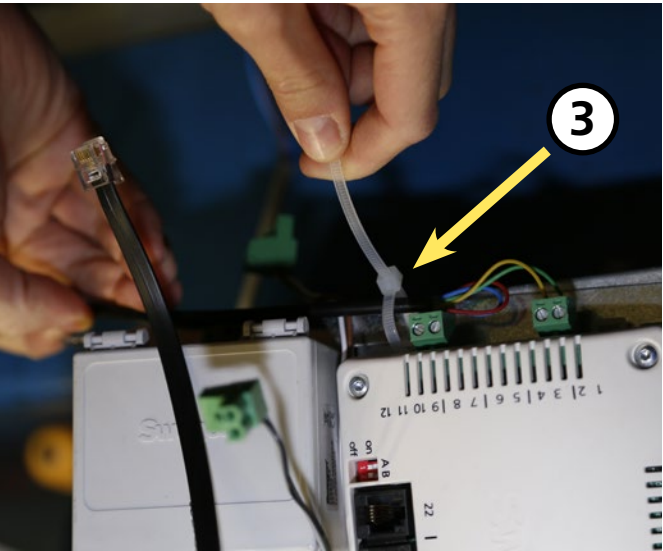
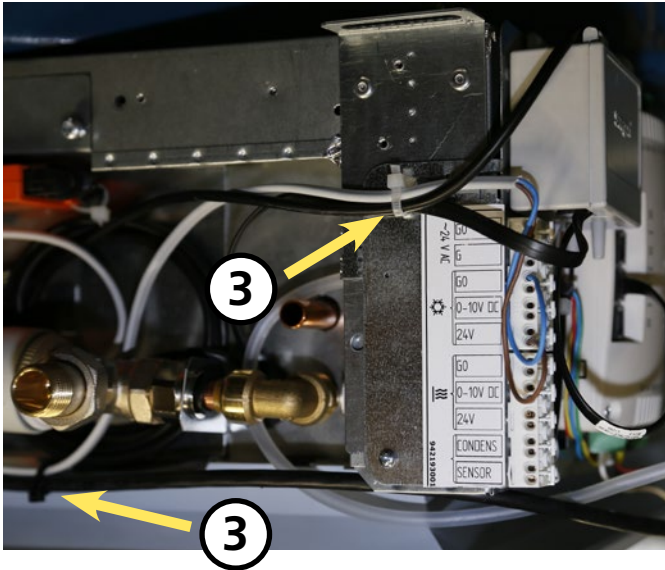
The red LED, visible through the top of the housing, has 4 functions.

1. Short blink once every 15 seconds to show the device is working properly
2. Rapid continuous blinking to show the dew point switching set point is close
3. Continuously ON when the output is switched on.
4. On long flash followed by 2 short flashes to show the temperature element is faulty.



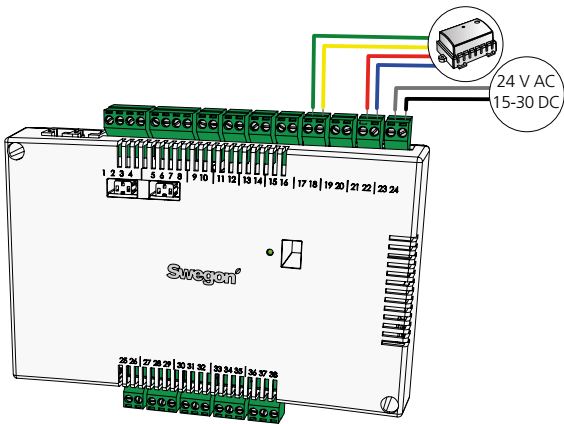
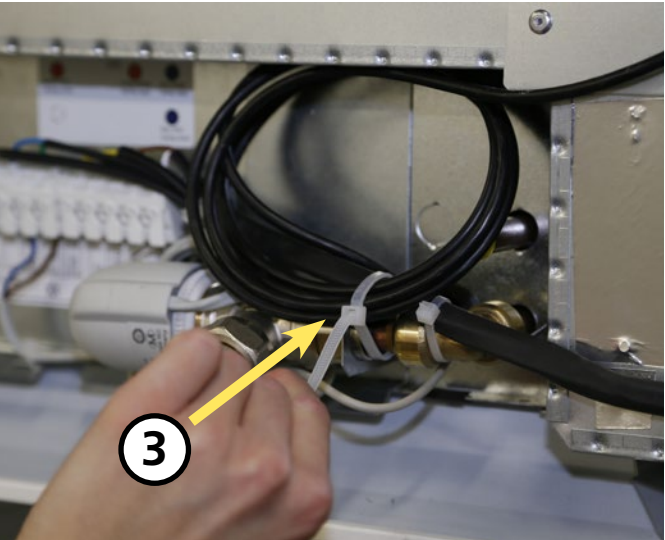
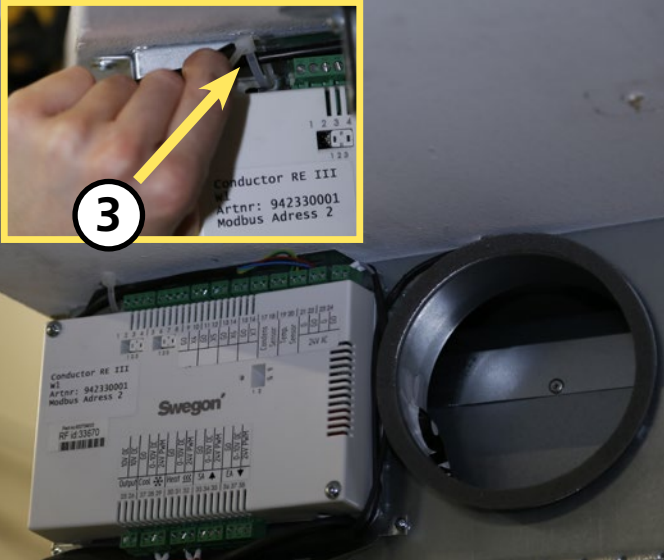


To connect condensation sensor WCD2 to ADAPT Parasol



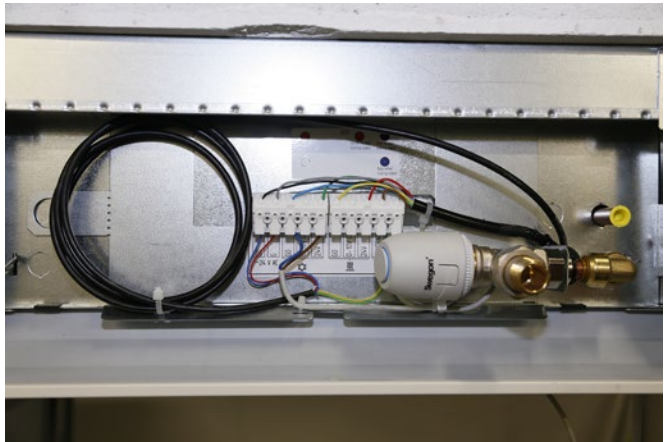
Condensation sensor WCD2	3	Green
	4	Yellow
	9	Red
	10	Blue
24V AC	11	Grey
	12	Black

To connect condensation sensor WCD2 to PARASOL with CONDUCTOR

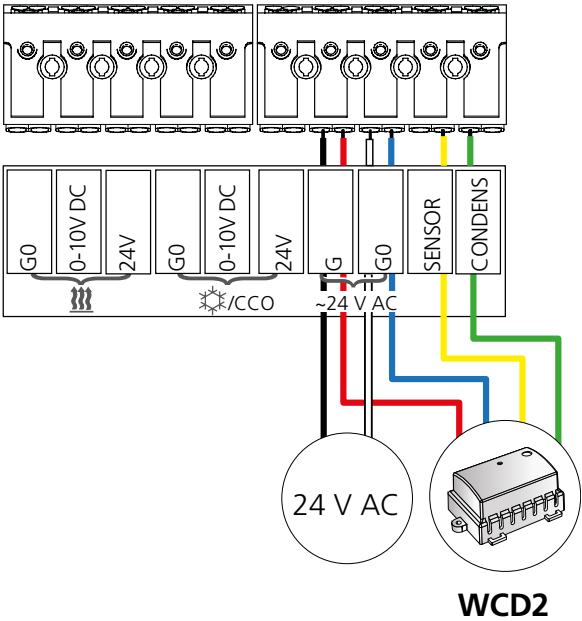


	Colour	Conductor RE
Condensation sensor WCD2	Green	17
	Yellow	18
	Red	21
	Blue	22
24V AC 15-30 DC	Grey	23
	Black	24

To connect condensation sensor WCD2 to PARASOL with LUNA



	Colour	Plinth
Condensation sensor WCD2	Blue	G0
	Red	G
	Green	CONDENS
	Yellow	SENSOR



	Colour	LUNA RE-S
Condensation sensor WCD2	Blue	6
	Red	5
	Yellow	6
	Green	9

LUNA RE-S

